



www.inteva.es

Multi-coupling CPRM



MANAGEMENT SYSTEM CERTIFICATE

Certificate no.:
282929-2019-AD-IBE-ENAC

Initial certification date:
22 February 2016

Valid:
11 March 2022 – 19 February 2025
Expiry date of last certification cycle:
19 February 2022
Date of last re-certification:

This is to certify that the management system of

INDUSTRIAS TECNICAS DE VALVULERIA, S.A.

C/ Berguedà, 14-16 (Esq. Empordà), Pol. Ind. Can Bernades - Subirà, 08130, Santa Perpetua de
Mogoda, Barcelona, Spain

has been found to conform to the Quality Management System standard:
ISO 9001:2015

This certificate is valid for the following scope:

Design, manufacture and sales of quick couplings, check valves and ball valves.

Place and date:
Barcelona, 11 March 2022

For the issuing office:
DNV - Business Assurance
Gran Via de les Corts Catalanes 130-136, Pl. 9,
08038, Barcelona, Spain



Ana del Rio Salgado
Management Representative



USER MANUAL

Quick Couplings



Before installation!!!

- ✓ Read carefully the assembly and safety instructions.
- ✓ Installation of Quick Couplings can be only done by well **qualified personnel**.
- ✓ Check whether the **product meets the requirement** and if it has been damaged during transport.
- ✓ Ensure that **quick coupling is suitable for installation, required pressure, connection, flow characteristic and is compatible with the medium used**.
- ✓ Before installation **clean up hose and pipes**.
- ✓ Check that line **temperature** work within permitted limits.
- ✓ Verify if **maximal working pressure is equal or higher than the peak pressures of the application**.
- ✓ Verify that the **number of cycle impulses** of the product is compatible with those of the application.



Start-up!!

- ✓ Installation of Quick couplings can be only done if the circuit is **depressurized**.
- ✓ Make sure the **energy supply is disconnected**.
- ✓ **Always wear protective clothing**.
- ✓ Use **flexible hoses** to withstand better the system vibration and mechanical tensions on the couplings.
- ✓ Use **appropriate tools** to act only over flat sides of the couplings
- ✓ Hose must be installed so that the connection/disconnection can be done easily and **aligned position**.
- ✓ Make sure to **work always within permitted limits on pressure and temperature**.
- ✓ Lubricate the seals and run always a **test connection** to ensure both halves connect correctly.
- ✓ Connect screw couplings always up to the stop mark.



Storage

All our quick and screw couplings are brought through a heat and surface treatment to improve its conservation. We recommend:

- Store in cool, dry, and high places above the ground.
- Keep away from heat sources or direct impact of the sunlight.
- Review periodically the valves whether these have signs of corrosion, cracks and/or visible damages.



Maintenance

- To avoid unexpected damages, **run regularly inspections**. If during inspection or first runs following conditions are detected, system should be turned off and the product replaced:
 - ✓ Malfunction
 - ✓ Presence of leakage
 - ✓ Visible damages, cracks and or corrosion
 - ✓ Difficulties by connecting/disconnecting
 - ✓ System contamination
- Sealing components should be lubricated with compatible lubricant.
- The maintenance period should be defined by the end user depending on the type of application and operating conditions.

The functionality of the product can be affected by a wrong maintenance.



Warnings!!!

- ✗ **Avoid contaminating the hydraulic system**. Contaminated mediums can damage internal sealing components leading to leakages and malfunctions.
 - ✓ Before installation **clean up hose and pipes**.
 - ✓ Before connection **clean up** both halves male and female.
 - ✓ After disconnection **use our dust caps and plugs to protect** the couplings from dirt and external damages.
- ✗ **Lateral loads, vibration and mechanical stress in general, can cause misalignment of couplings** during connection / disconnection and can cause unwanted disconnection, damage the connection and sealing. It reduces significantly the life of the product. We recommend using flexible hoses.
- ✗ **Do never use inappropriate tool** e.g. clamp tools, hammers, key tools. It can damage the couplings leading to malfunction.
- ✗ While disconnecting, depending on the positioning and temperature the **residual pressure** can reach high values. **Do not use any tool to force the disconnection and relieve the pressure trapped inside**.
- ✗ **Operating over and under the permitted working pressure and temperature limits, leads to deterioration and leakages of the quick couplings**.
- ✗ **Do not connect and disconnect at temperatures < 80°C**. Operating between 30°C – 80°C use gloves and other safety devices to prevent injury itself, thirds, animals and/or objects.
- ✗ **Never rotate the couplings while under pressure**.
- ✗ **Use care if you must install quick couplings onto iron pipe**.
- ✗ In case of malfunction, quick coupling must be replaced by qualified personnel. First depressurize and drain the system. If necessary, out of service.
- ✗ **If our quick couplings are dismantled improperly without authorization, any warranty and damage claim against the manufacturer are null and void**.
- ✗ **Any changes on design or reworks on quick couplings e.g. dimensional or superficial, is strictly prohibited without previous consultation with the manufacturer**.
- ✗ This manual is not intended to replace any national regulation on accident prevention and local safety regulations of the operating company, which on this should be considered a priority.

INTEVA and its distributors are not responsible for damages caused on people or machines for an improper use or incorrect maintenance of the products.

The product selection, installation, maintenance and use, is under end users responsibility.

The distributor must ensure that that all product requirements are met and must inform the end user about the product use and maintenance.



Elimination

In compliance with the laws of each country on the disposal of industrial waste, the quick couplings in disuse must be eliminated taking into account that all components can be recycled.

Consider that:

- Elimination and removal must be done by qualified personnel only.
- Before extraction, depressurize pipes and circuit. The quick couplings must relieve pressure from its cavity as well.

V160421



USER MANUAL CPR Flat Face



WARNINGS!

✘ **Avoid contaminating the system.** In this way, we avoid the waste inclusion that can damage the sealing elements. Contaminating the hydraulic fluid that leads to leakages and malfunctions.



If dirt enters in **Zone 1**, **internal sealing components can be damaged** (O-Ring, Back-up Ring)



Dirt is the main cause of a malfunction on this part of the coupling.



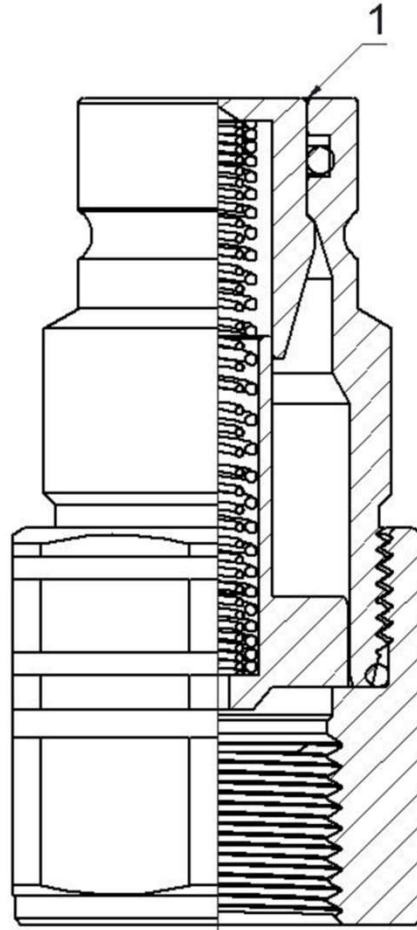
Recommendations...

- ✔ Before installing, **clean-up the hoses and pipes.**
- ✔ Before connecting: **clean-up** carefully the flat faces either on male and female coupling.
- ✔ While disconnecting: never leave the couplings on the ground, use **our dust caps/plugs** to protect from contaminating and external damages.
- ✘ **Do not damage the flat side of the male coupling, Zone 1.** This can lead to damages on internal sealing components of the female half while connecting both parts.
- ✘ **Do not overload the coupling.** Fix the hoses by flexible supports.
- ✘ **Avoid rotations** between both couplings male and female.



While connected it is difficult to detect leakages!

If the **sealing components** (O-Ring, Back-up Ring) of the male coupling are damaged, **in most of the cases the leakage cannot be detected.** While connecting, the damaged seal is exposed and leakages appear on the sleeves of the female coupling. Generally the female coupling as an individual element isn't damaged.



Do never use a SCREWDRIVER for moving the flat valves back, forcing the opening of these and relieve the residual pressure trapped in the circuit, running the risk to **damage the seals by sliding on the smooth surface on the flat front.**

V160421



USER MANUAL

CPR Flat Face



WARNINGS!

✖ **Avoid contaminating the system.** In this way, we avoid the waste inclusion that can damage the sealing elements. Contaminating the hydraulic fluid that leads to leakages and malfunctions.



If dirt enters in Zone 1, 2 or 3, following failures can appear:

1. **Male half and female half cannot be engaged.**
2. **Dirt can damage internal component 4.** When connected, female leaks.
3. **If dirt enters in Zone 5 it can affect the back movement of the sleeve what leads to an inappropriate connection between both halves.**
4. **Ensure pulling the sleeve totally down for a safety disconnection.**

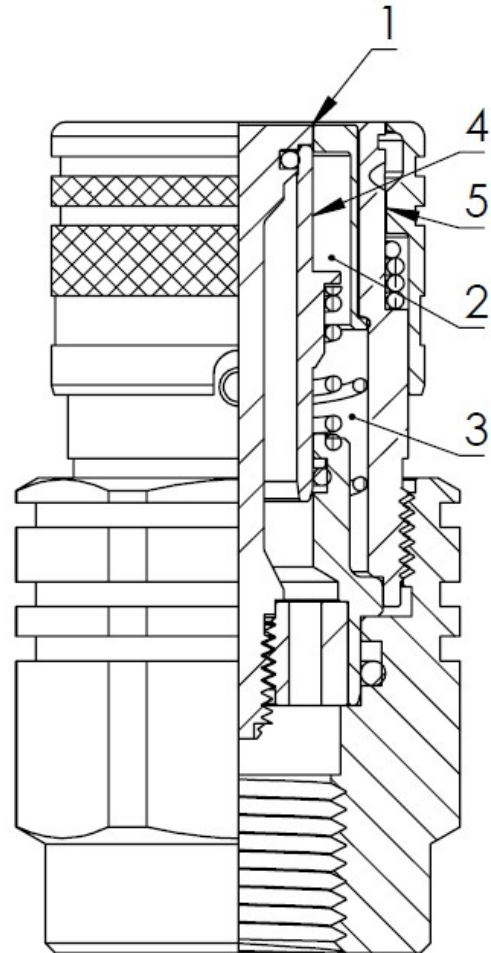


Dirt is the main cause of a malfunction on this part of the coupling.



Recommendations...

- ✓ Before installing, **clean-up the hoses and pipes.**
- ✓ Before connecting: **clean-up** carefully the flat faces either on male and female coupling.
- ✓ While disconnecting: never leave the couplings on the ground, use **our dust caps/plugs** to protect from contaminating and external damages.



Decompression...

If female coupling is pressurized and pressure cannot be relieved by a control unit, the decompression of the female coupling is not possible.

V160421

5001 SERIES

CPRM MULTI-COUPLING



Multi-coupling (CPRM)

CPRM Multi couplers allow the simultaneous connection of two or even four hydraulic lines. The connection can be made with residual pressure.

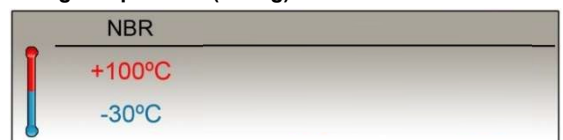
The design of the different components, makes the connection easy, just with a simple and low effort with the lever. It also has a locking system to avoid disconnection of both parts.

Also available a cover plate, to protect the circuit from dirt inclusion while disconnected.

TECHNICAL SPECIFICATIONS

Material:	Aluminium
Seals:	NBR
Size:	3/8"
Connections:	2 / 4
Connection under pressure:	Allowed Residual

Working Temperature (O-ring)



Sectors: Vehicles / Agricultural / Industrial



5001-1

INTEVA reserves the right to make modifications to its products without prior notice. Any external or internal alterations to our products will automatically void the warranty.





5001 SERIES

CPRM MULTI-COUPLING

MODEL STRUCTURE

Example:

5001.61342MAD

Series	Material	Closing	N° Connec	Size (S)	Part	Thread
5001	6 Aluminun	3 C.U.R.P.	2 Conex. 4 Conex.	2 10 3/8"	M Male H Female	2 letters (see Table ofThreads page 999-1)



5001-2

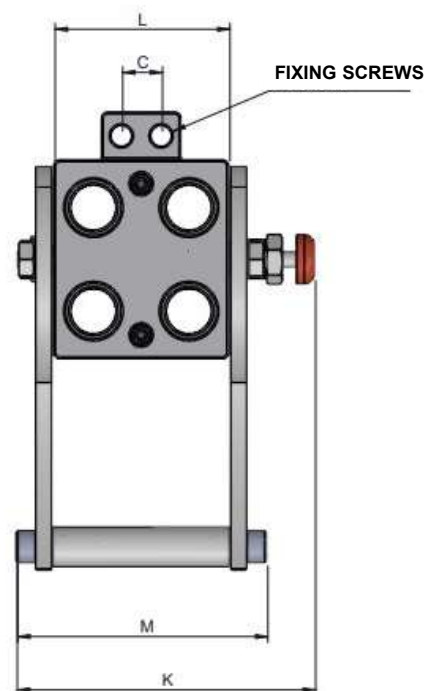
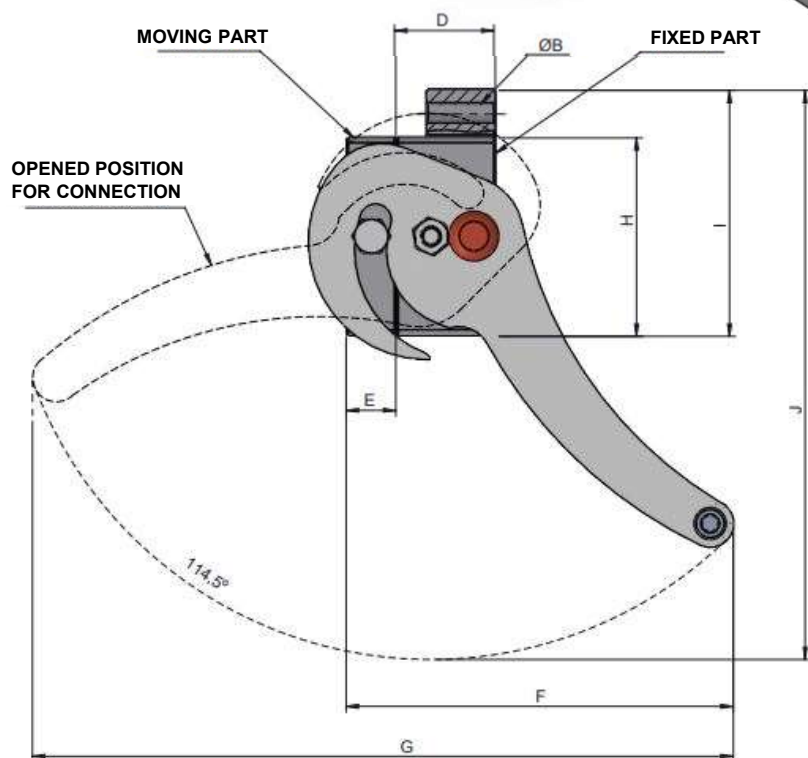
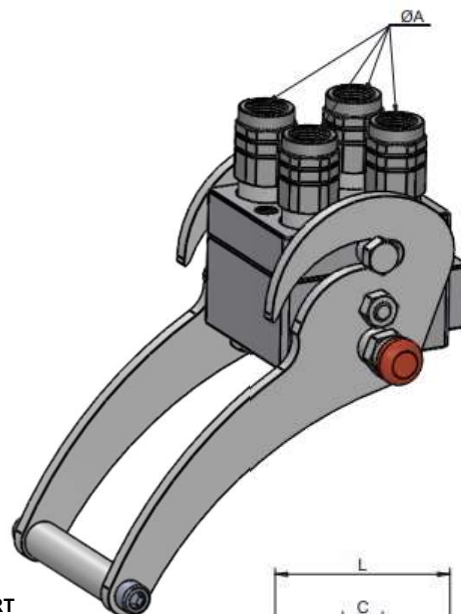
INTEVA reserves the right to make modifications to its products without prior notice. Any external or internal alterations to our products will automatically void the warranty.



5001 SERIES

CPRM MULTI-COUPLING

MODEL STRUCTURE / DIMENSIONS



N° CONNEC.	ØA	REF.	ØB	C	D	E	F	G	H	I	J	K	L	M
4	3/8" BSP	5001.61342AC	10.2	20	50	25	195	352.5	100	124	287	150	88	126
	1/2" BSP	5001.61342AD												

5001-3

INTEVA reserves the right to make modifications to its products without prior notice. Any external or internal alterations to our products will automatically void the warranty.

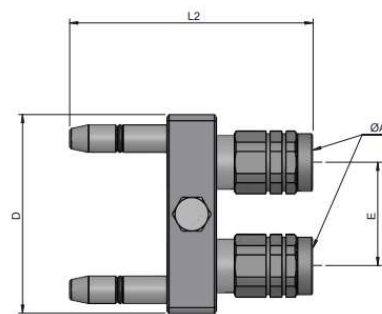
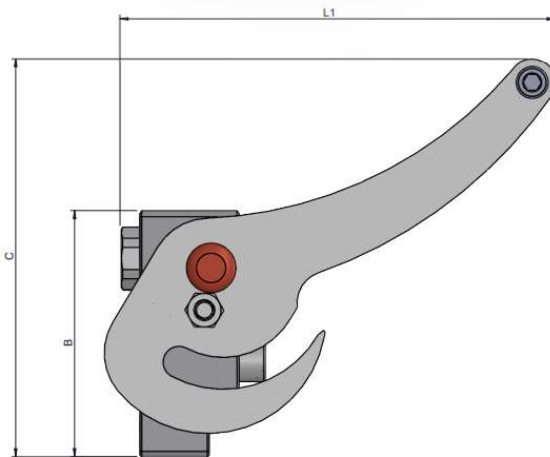
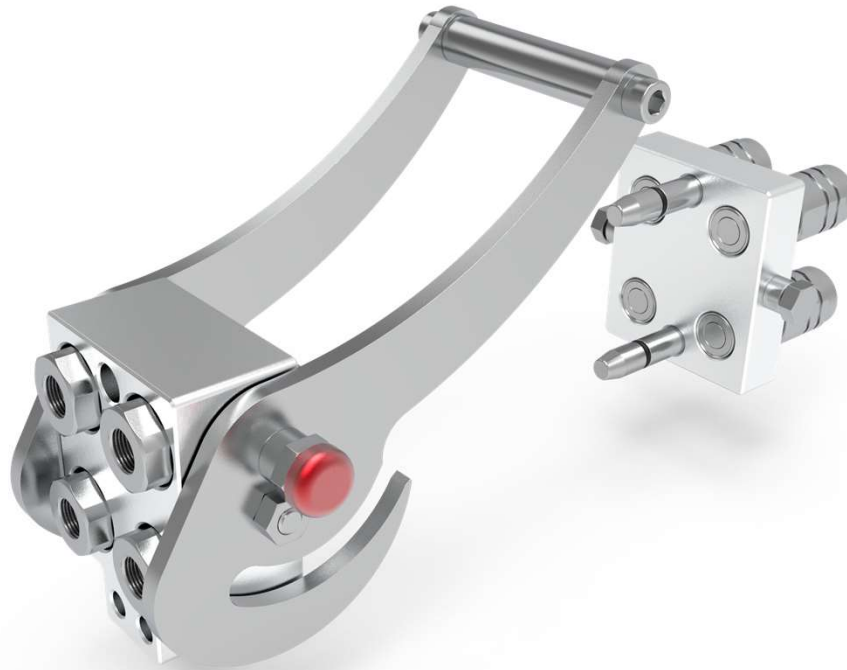




5001 SERIES

CPRM MULTI-COUPLING

MODEL STRUCTURE



STANDARD MALE MODELS

(S)	ØA	REF.	B	C	L1
10	3/8" BSP	5001.61342MAC	124	186	214
	1/2" BSP	5001.61342MAD			

STANDARD FEMALE MODELS

(S)	ØA	REF.	D	E	L2
13	3/8" BSP	5001.61142HAC	100	52	122.5
	1/2" BSP	5001.61142HAD			

5001-4

INTEVA reserves the right to make modifications to its products without prior notice. Any external or internal alterations to our products will automatically void the warranty.

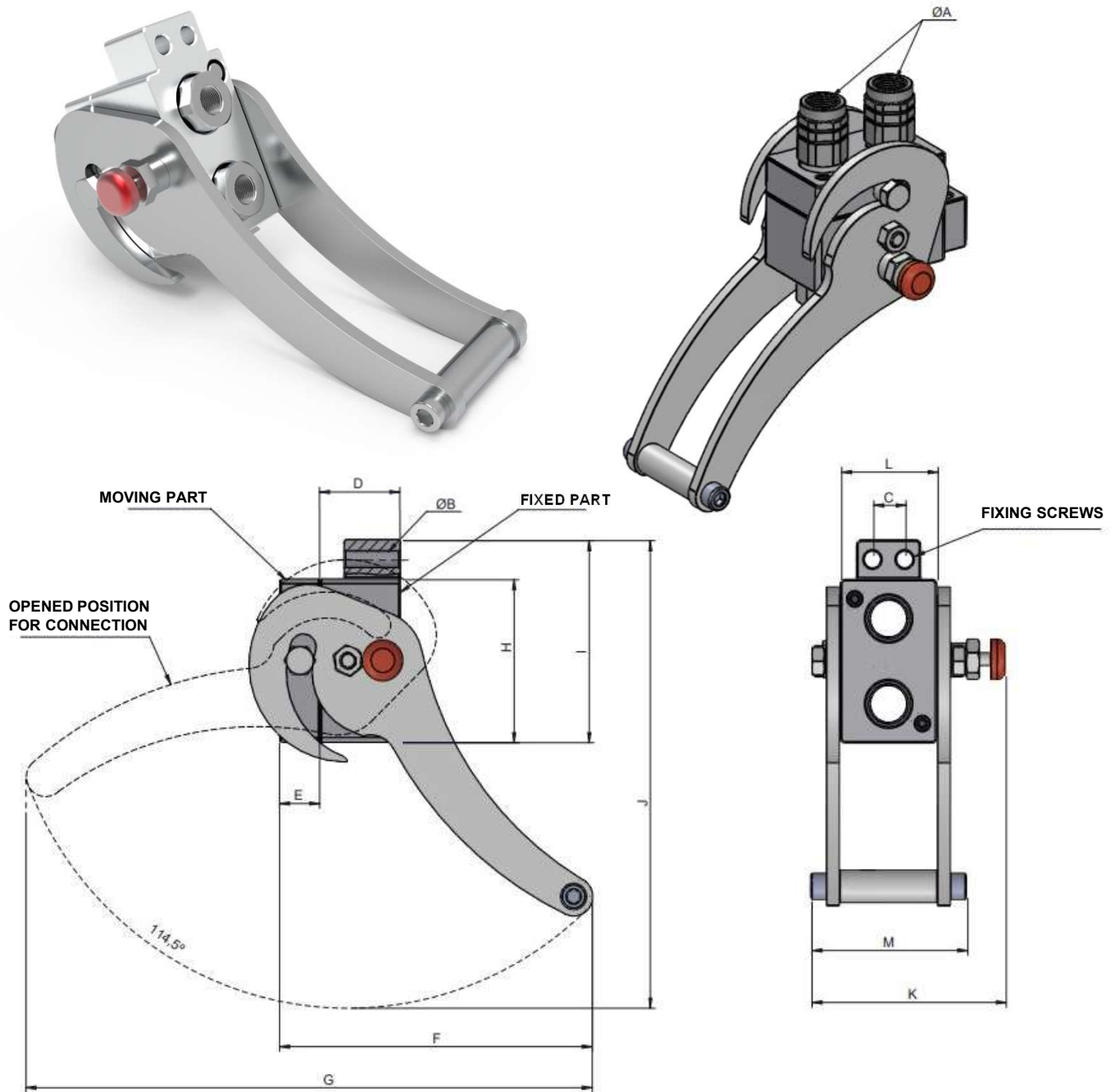




5001 SERIES

CPRM MULTI-COUPLING

MODEL STRUCTURE / DIMENSIONS



N° CONNEC.	F	REF.	ØB	C	D	E	F	G	H	I	J	K	L	M
2	3/8" BSP	5001.61322AC	10.2	20	50	25	195	352.5	100	124	287	121	60	97
	1/2" BSP	5001.61322AD												

5001-5

INTEVA reserves the right to make modifications to its products without prior notice. Any external or internal alterations to our products will automatically void the warranty.

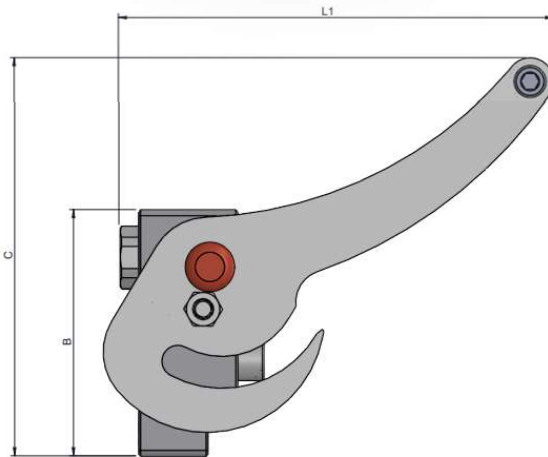




5001 SERIES

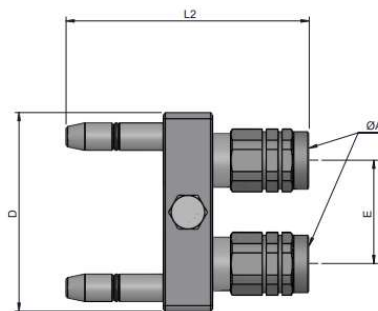
CPRM MULTI-COUPLING

MODEL STRUCTURE



STANDARD MALE MODELS

(S)	ØA	REF.	B	C	L1
10	3/8" BSP	5001.61322MAC	124	186	214
	1/2" BSP	5001.61322MAD			



STANDARD FEMALE MODELS

(S)	ØA	REF.	D	E	L2
13	3/8" BSP	5001.61122HAC	100	56	122.5
	1/2" BSP	5002.61122HAD			

5001-6

INTEVA reserves the right to make modifications to its products without prior notice. Any external or internal alterations to our products will automatically void the warranty.





5001 SERIES

CPRM

MULTI-COUPLING CAP

MODEL STRUCTURE

Example:

5001.61142HT

Series	Material	N° Connect	Size (S)	Part
5001	6 Aluminium	2 Connect. 4 Connect.	2 10 3/8"	HT Female cap



Adapted cover to protect the circuit from dirt when it is not connected.

5001-7

INTEVA reserves the right to make modifications to its products without prior notice. Any external or internal alterations to our products will automatically void the warranty.



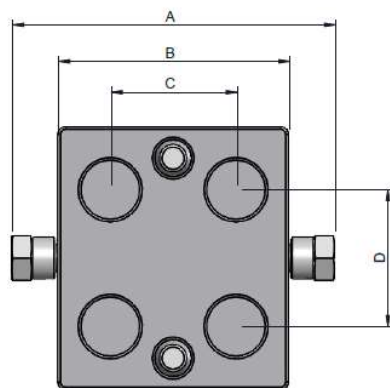
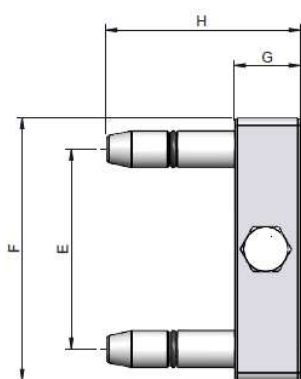
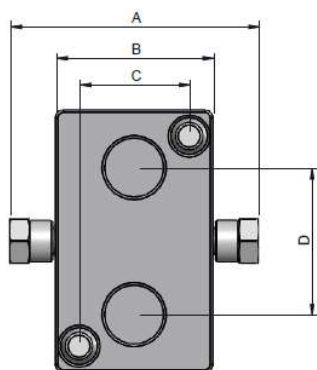
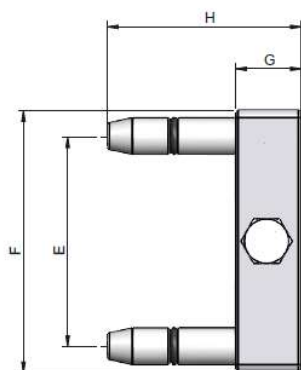


5001 SERIES

CPRM

MULTI-COUPLING CAP

MODEL STRUCTURE/ DIMENSIONS



N° CONNECT.	REF.	A	B	C	D	E	F	G	H
2	5001.61122HT	95	60	42	56	80	100	25	74
4	5001.61142HT	123	88	48	52	76			

5001-8

INTEVA reserves the right to make modifications to its products without prior notice. Any external or internal alterations to our products will automatically void the warranty.



v12



131MR SERIES

CPRM

CARBON STEEL

Manufactured according to ISO 16028.

TECHNICAL SPECIFICATIONS

Operating pressure:	Up to 350 Bar	
Materials:	Body:	Carbon Steel EN-10277-3
	O-rings:	NBR / VITON / EPDM
	Back-up-ring:	PTFE
	Springs:	EN 10270-1/SH
	Balls:	AISI 1010/1015
Available Threads:	BSP	
Closing System:	C.U.R.P.	
Connection:	Multi-coupling	
Disconnection:	Multi-coupling	
Connection Under Pressure:	Allowed	

Available Size: 3/8"

Working Temperature (O-rings)

	NBR	Viton	EPDM
	+100°C	+200°C	+150°C
	-30°C	-10°C	-40°C

Sectors: Industrial / Agricultural



Applications: Designed for Hydraulic Oil (Group II-2014/68/EU)

Interchange:

MODEL STRUCTURE

Example:

131MR.11312 AD

Series	Material	Part	Closing	O-rings	Size (S)	Threads
131MS.	1 Carbon S..	1 Male 2 Female	3 C.U.R.P	1 NBR 2 VITON 3 EPDM	2 10 : 3/8"	2 letters (see Table of Threads page 999-1)

131MR-1

INTEVA reserves the right to make modifications to its products without prior notice. Any external or internal alterations to our products will automatically void the warranty.



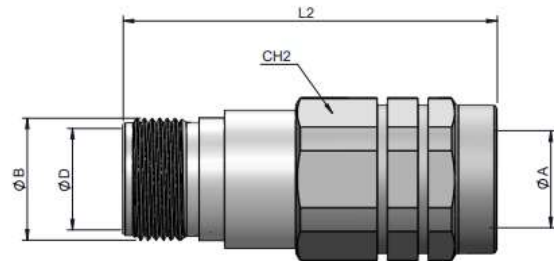
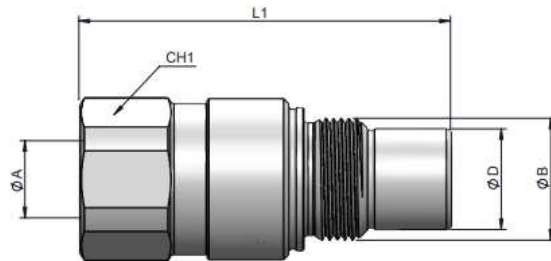


131MR SERIES

CPRM

CARBON STEEL

(S) 10

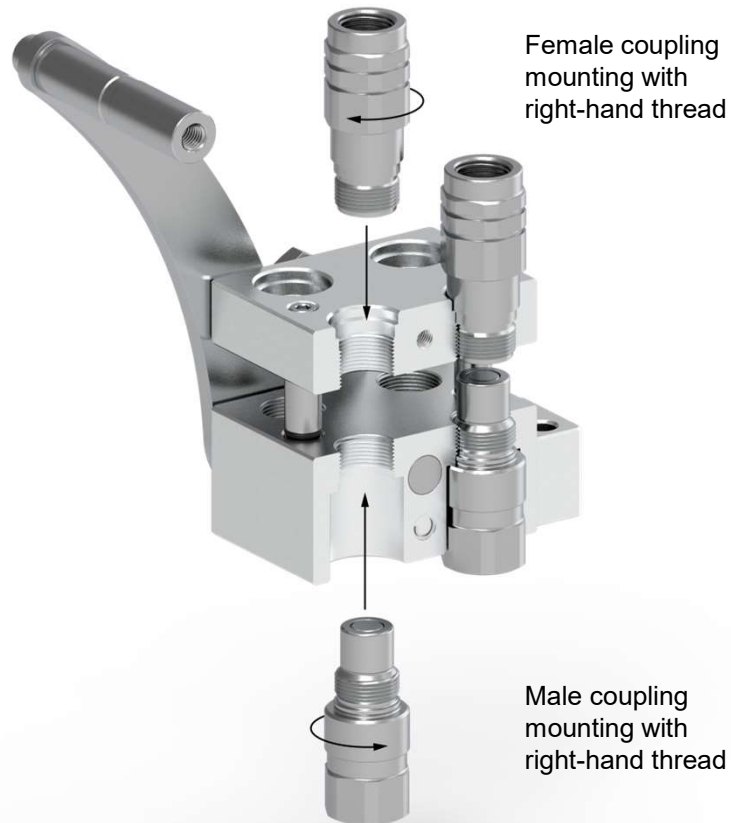


STANDARD MALE MODELS

STANDARD FEMALE MODELS

(S)	ØA	REF.		CH1	L1	ØB	ØD	REF.		CH2	L2	ØB	ØD
10	3/8" BSP	131MR.11312AC		30	73	M24x1.5	19.8	131MR.12112AC		30	73.5	M24x1.5	19.9
	1/2" BSP	131MR.11312AD						131MR.12112AD					

QUICK COUPLER ASSEMBLY INSTRUCTIONS



131MR-2

INTEVA reserves the right to make modifications to its products without prior notice. Any external or internal alterations to our products will automatically void the warranty.





C/ Berguedà nº 14-16 P.I. Can Bernadés Subirà
08130 Santa Perpètua de la Mogoda
BARCELONA (SPAIN)
Tel / Phone +34 93 560 79 43
Fax +34 93 574 30 94