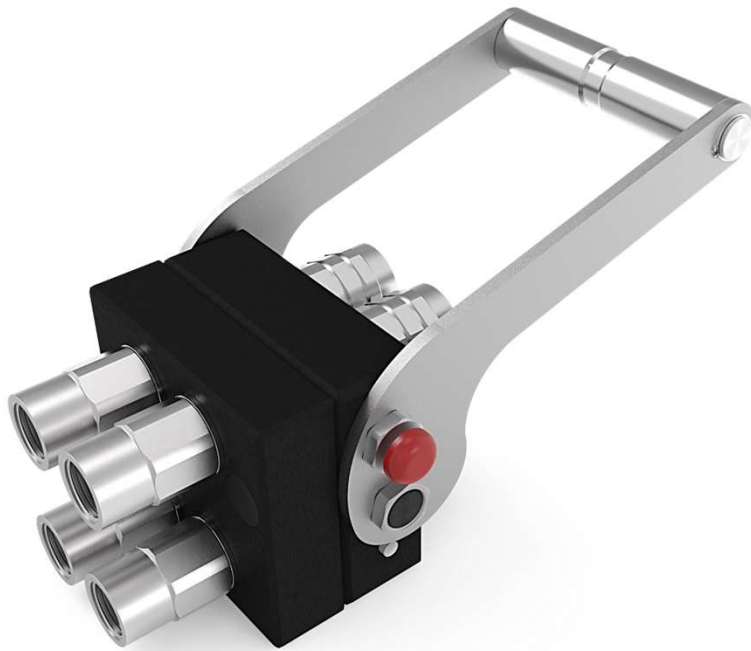


5002 SERIES

CPR

MULTI-COUPLING

Multi-coupling (CPR)



CPR Multi couplers allow the simultaneous connection of two or even four hydraulic lines. The connection can be made with residual pressure.

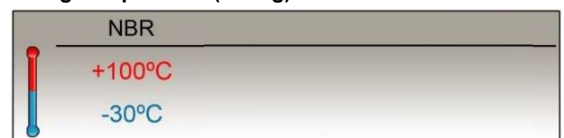
The design of the different components, makes the connection easy, just with a simple and low effort with the lever. It also has a locking system to avoid disconnection of both parts.

Also available a cover plate, to protect the circuit from dirt inclusion while disconnected.

TECHNICAL SPECIFICATIONS

Material:	Aluminium / Steel
Seals:	NBR
Size:	3/8"
Connections:	2 / 4
Connection under pressure:	Allowed Residual
Interchange	STUCCHI FAP-P

Working Temperature (O-ring)



Sectors: Vehicles / Agricultural / Industrial



5002-1

INTEVA reserves the right to make modifications to its products without prior notice. Any external or internal alterations to our products will automatically void the warranty.





5002 SERIES

CPR MULTI-COUPLING

MULTI-COUPLING

MODEL STRUCTURE

Example:

5002.61342 AC-M

Series	Material	Cierre	Nº Conec	Size (T)	Thread	Part
5002	6 Aluminium	0 Without 1 Poppet 2 Ball 3 C.U.R.P.	2 Conex. 4 Conex.	2 10 3/8"	2 letters (see Table of Threads page 999-1)	M Male H Female



5002-2

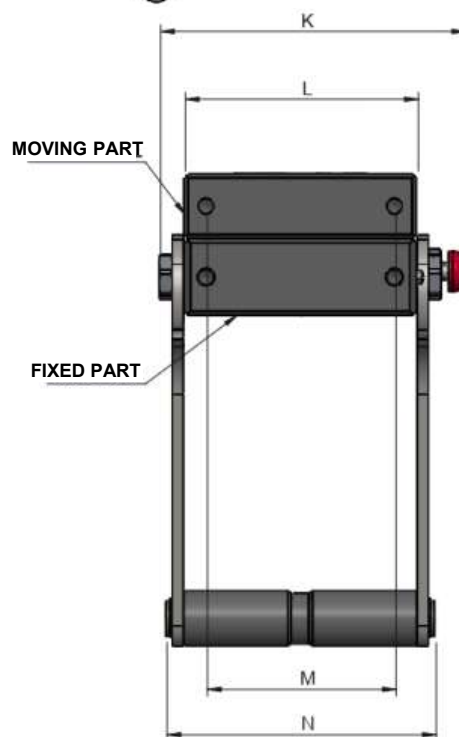
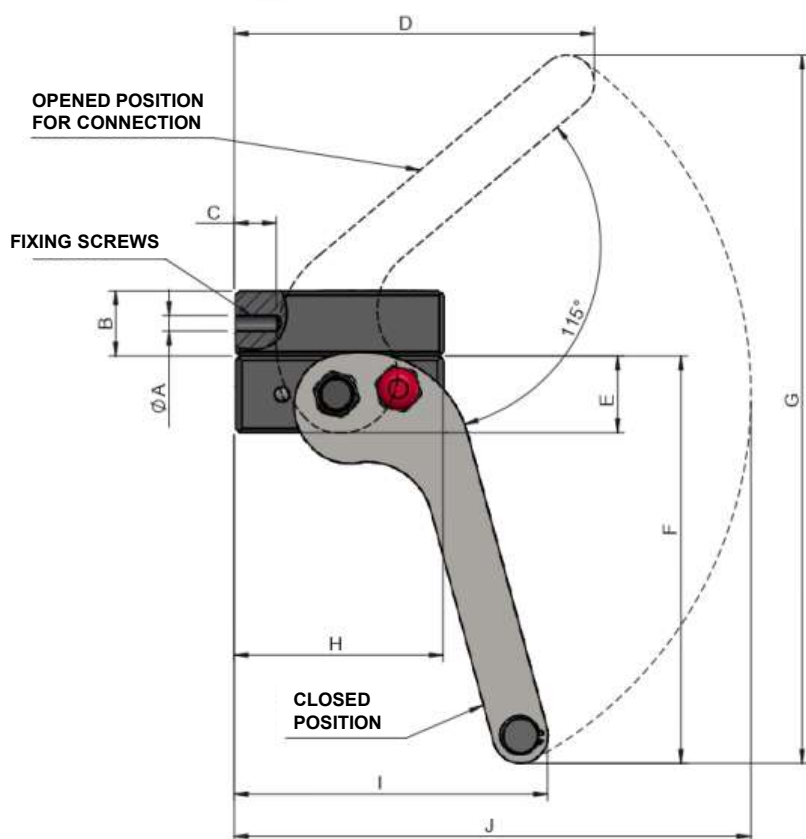
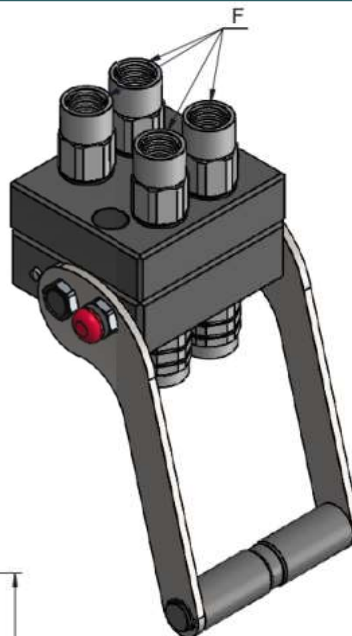
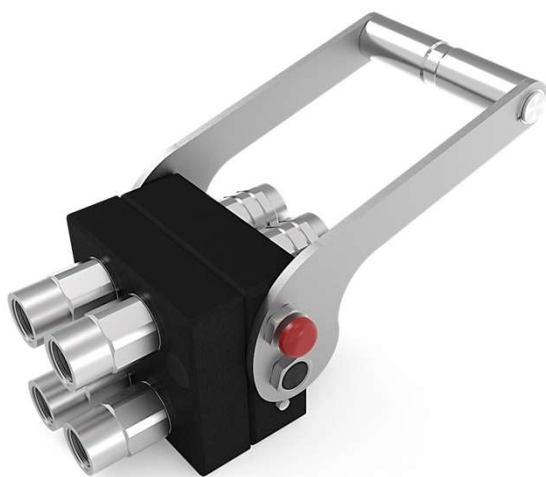
INTEVA reserves the right to make modifications to its products without prior notice. Any external or internal alterations to our products will automatically void the warranty.



5002 SERIES

CPR MULTI-COUPLING

MODEL STRUCTURE / DIMENSIONS



N° CONNE.	F	REF.	Ø A	B	C	D	E	F	G	H	I	J	K	L	M	N
4	3/8" BSP	5002.61342AC	M8	29.3	19	162	34.5	183.2	318.6	94	141	232.5	137.4	105	85	121.5
	1/2" BSP	5002.61342AD														

5002-3

INTEVA reserves the right to make modifications to its products without prior notice. Any external or internal alterations to our products will automatically void the warranty.



v11

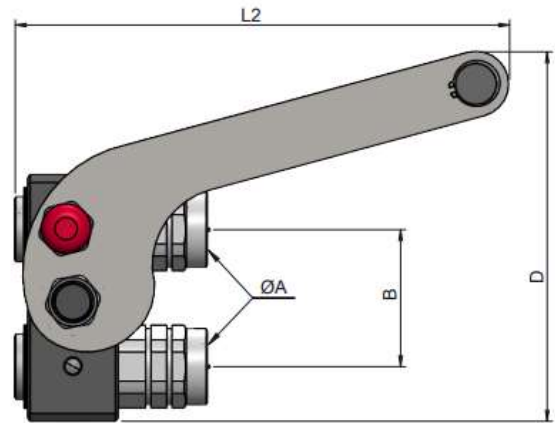
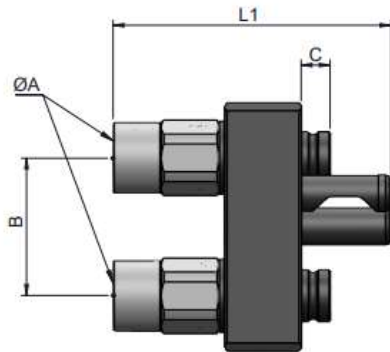
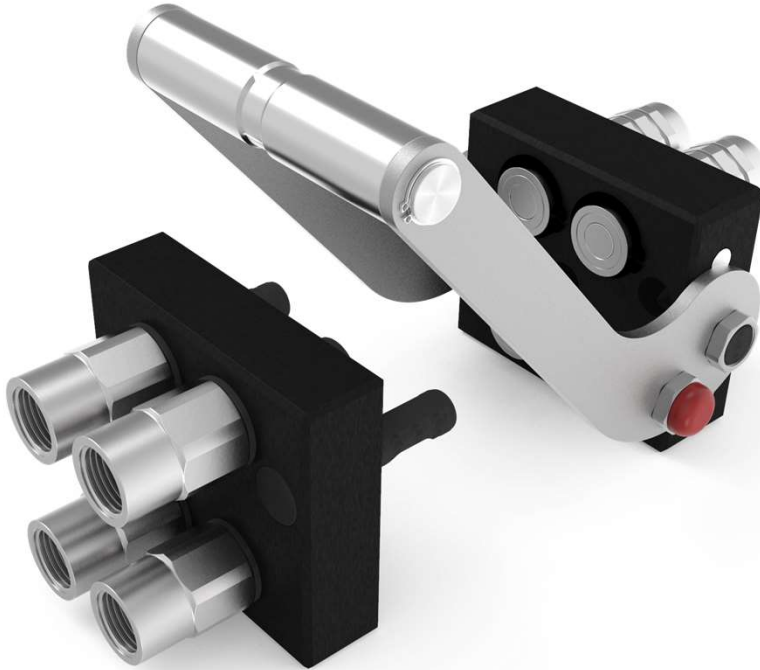


5002 SERIES

CPR

MULTI-COUPLING

MODEL STRUCTURE



STANDARD MALE MODELS

(S)	ØA	REF.	B	C	L1
10	3/8" BSP	5002.61342AC-M	52.3	11	105.7
	1/2" BSP	5002.61342AD-M			

STANDARD FEMALE MODELS

(S)	ØA	REF.	D	E	L2
13	3/8" BSP	5002.61142AC-H	340	35	123.7
	1/2" BSP	5002.61142AD-H			

5002-4

INTEVA reserves the right to make modifications to its products without prior notice. Any external or internal alterations to our products will automatically void the warranty.

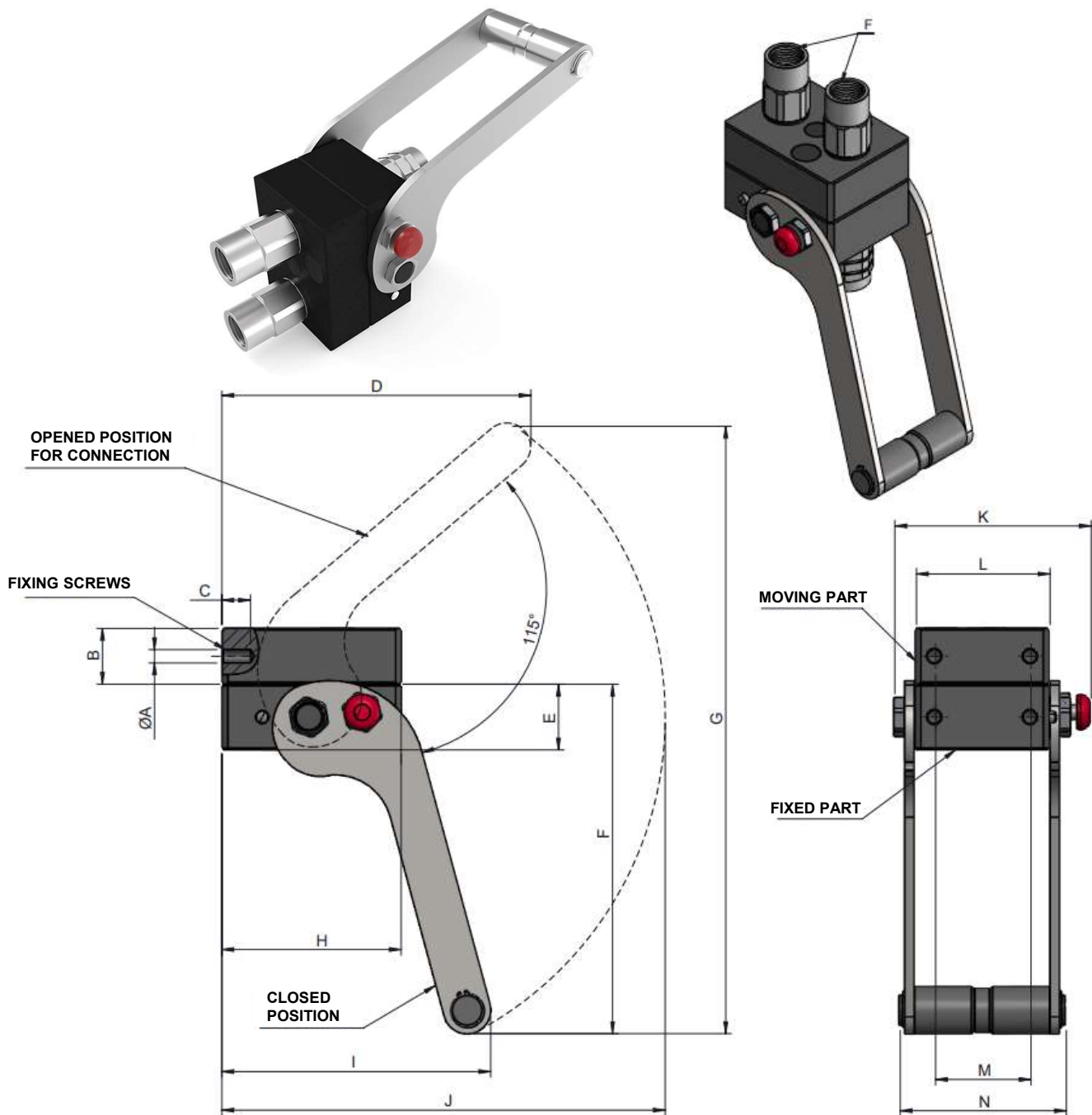




5002 SERIES

CPR MULTI-COUPLING

MODEL STRUCTURE / DIMENSIONS



N° CONNE.	F	REF.	Ø A	B	C	D	E	F	G	H	I	J	K	L	M	N
2	3/8" BSP	5002.61322AC	M8	29.3	15	162	34.5	183.2	318.6	94	141	232.5	102.8	70	50	87
	1/2" BSP	5002.61322AD														

5002-1

INTEVA reserves the right to make modifications to its products without prior notice. Any external or internal alterations to our products will automatically void the warranty.

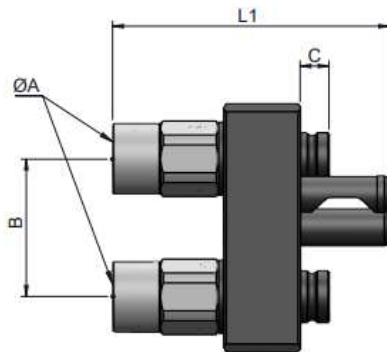
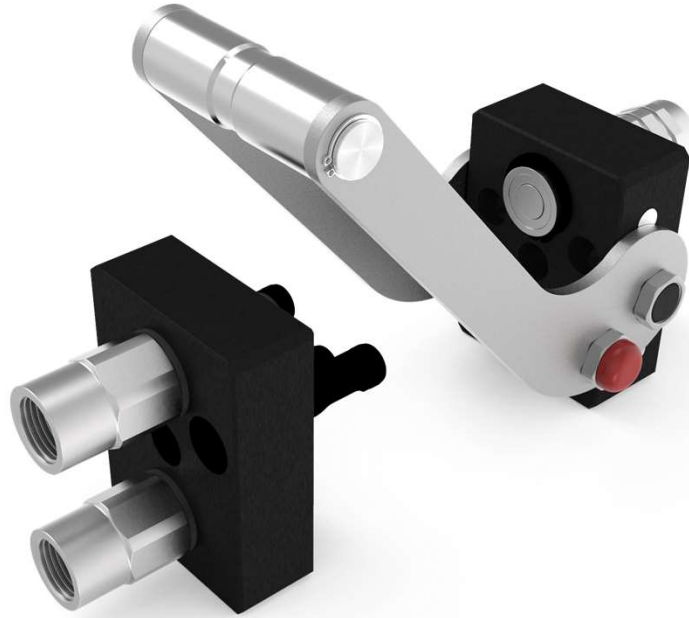




5002 SERIES

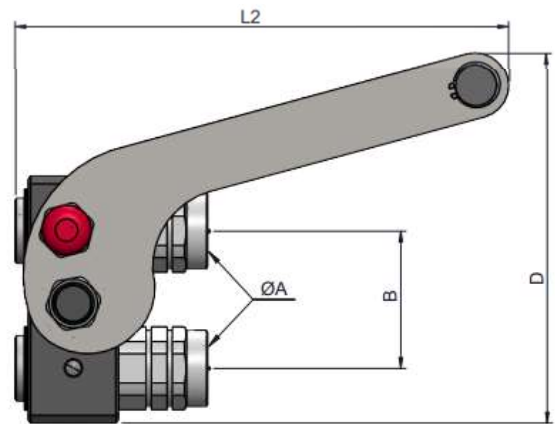
CPR MULTI-COUPLING

MODEL STRUCTURE



STANDARD MALE MODELS

(S)	ØA	REF.	B	C	L1
10	3/8" BSP	5002.61322AC-M	52.3	11	105.7
	1/2" BSP	5002.61322AD-M			



STANDARD FEMALE MODELS

(S)	ØA	REF.	D	E	L2
13	3/8" BSP	5002.61122AC-H	340	35	123.7
	1/2" BSP	5002.61122AD-H			

5002-6

INTEVA reserves the right to make modifications to its products without prior notice. Any external or internal alterations to our products will automatically void the warranty.





5002 SERIES

CPR

MULTI-COUPLING CAP

MODEL STRUCTURE

Example:

5002.61142HT

Series	Material	N° Connec	Size (S)	Part
5002	6 Aluminium	2 Connec. 4 Connec.	2 10 3/8"	HT Female cap

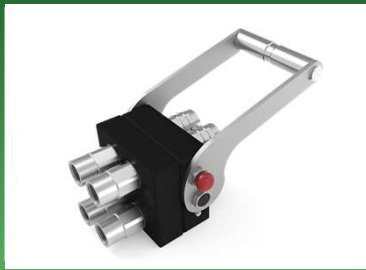


Adapted cover to protect the circuit from dirt when it is not connected.

5002-7

INTEVA reserves the right to make modifications to its products without prior notice. Any external or internal alterations to our products will automatically void the warranty.



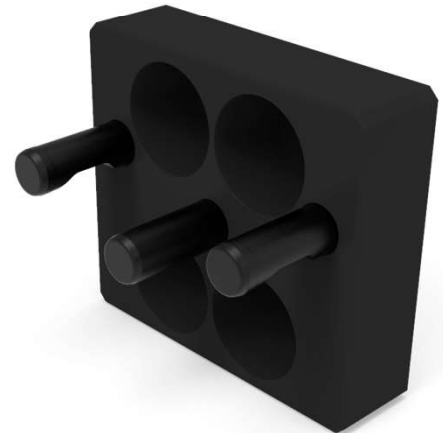
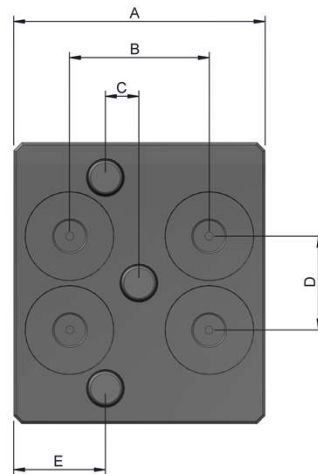
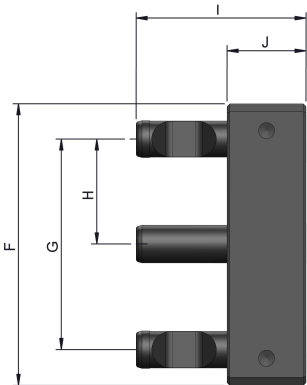
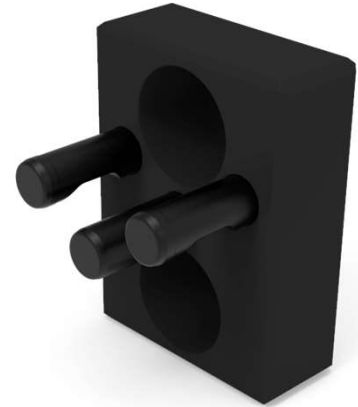
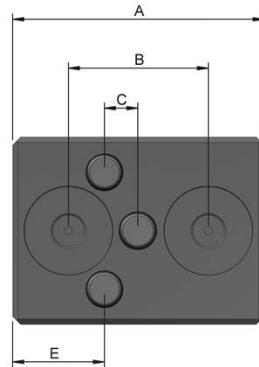
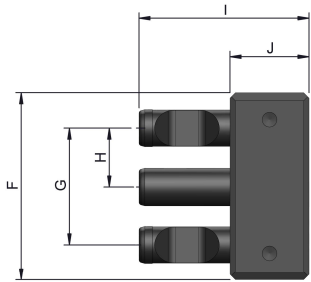


5002 SERIES

CPR

MULTI-COUPLING CAP

MODEL STRUCTURE/ DIMENSIONS



N° CONEX.	REF.	A	B	C	D	E	F	G	H	I	J
2	5002.61122HT	94	52.3	12.5	-	34.3	70	43.7	21.9	63.5	29.5
4	5002.61142HT				35		105	78.7	39.4		



131MS SERIES

CPR

CARBON STEEL


Manufactured according to ISO 16028.

TECHNICAL SPECIFICATIONS

Operating pressure:	Up to 350 Bar	
Materials:	Body:	Carbon Steel EN-10277-3
	O-rings:	NBR / VITON / EPDM
	Back-up-ring:	PTFE
	Springs:	EN 10270-1/SH
	Balls:	AISI 1010/1015
Available Threads:	BSP	
Closing System:	C.U.R.P.	
Connection:	Multi-coupling	
Disconnection:	Multi-coupling	
Connection Under Pressure:	Allowed	

Available Size: 3/8"

Working Temperature (O-rings)

	NBR	Viton	EPDM
	+100°C -30°C	+200°C -10°C	+150°C -40°C

Sectors: Industrial / Agricultural



Applications: Designed for Hydraulic Oil (Group II-2014/68/EU)

Interchange: STUCCHI FAP-P

MODEL STRUCTURE

Example:

131MS.11312 AD

Series	Material	Part	Closing	O-rings	Size (S)	Threads
131MS.	1 Carbon S..	1 Male 2 Female	3 C.U.R.P	1 NBR 2 VITON 3 EPDM	2 10 : 3/8"	2 letters (see Table of Threads page 999-1)

131MS-1

INTEVA reserves the right to make modifications to its products without prior notice. Any external or internal alterations to our products will automatically void the warranty.

