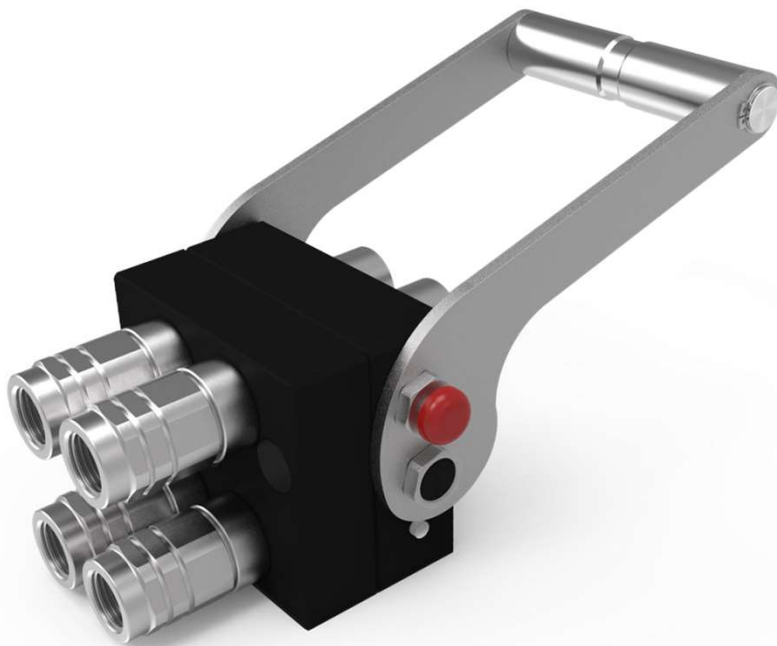


# 5002 SERIES

## CPR

MULTI-COUPLING



## Multi-coupling (CPR)

CPR Multi couplers allow the simultaneous connection of two or even four hydraulic lines. The connection can be made with residual pressure.

The design of the different components, makes the connection easy, just with a simple and low effort with the lever. It also has a locking system to avoid disconnection of both parts.

Also available a cover plate, to protect the circuit from dirt inclusion while disconnected.

### TECHNICAL SPECIFICATIONS

**Material:** Aluminium / Steel

**Seals:** NBR

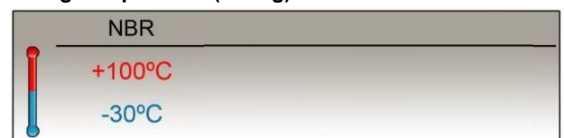
**Size:** 3/8"

**Connections:** 2 / 4

**Connection under pressure:** Allowed Residual

**Interchange** STUCCHI FAP-P

### Working Temperature (O-ring)



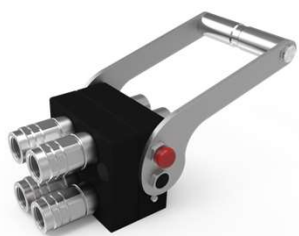
**Sectors:** Vehicles / Agricultural / Industrial



5002-1

INTEVA reserves the right to make modifications to its products without prior notice. Any external or internal alterations to our products will automatically void the warranty.





# 5002 SERIES

## CPR

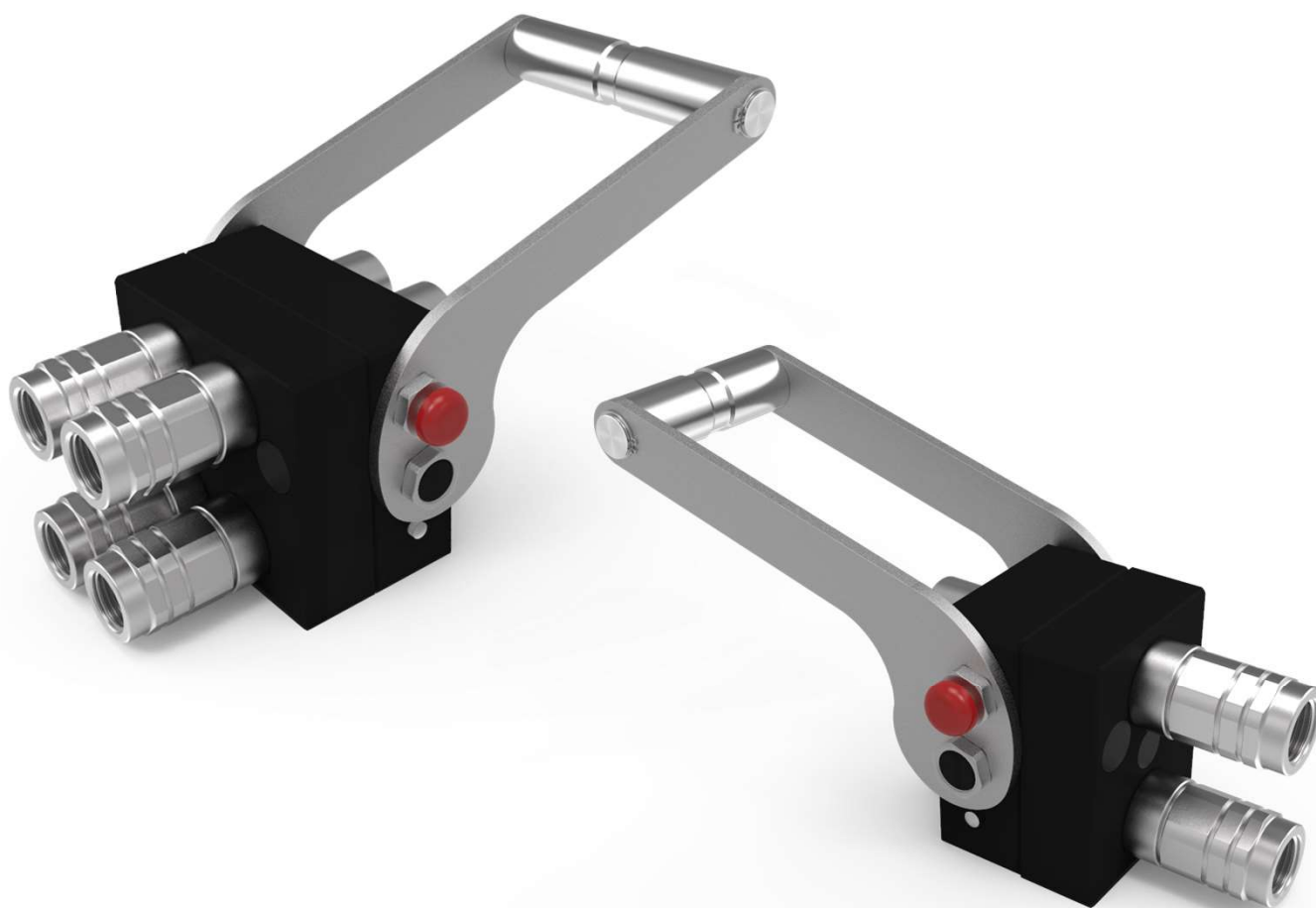
MULTI-COUPLING

### MODEL STRUCTURE

Example:

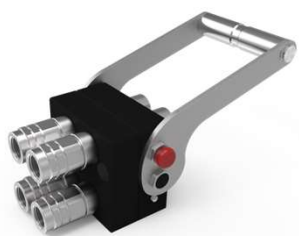
**5002.61342 AC-M**

Series	Material	Cierre	Nº Connec	Size (T)	Thread	Part
5002	6 Aluminium	0 Without 1 Poppet 2 Ball 3 C.U.R.P.	2 Conex. 4 Conex.	2 10 3/8"	2 letters (see Table of Threads page 999-1)	M Male H Female



**5002-2**

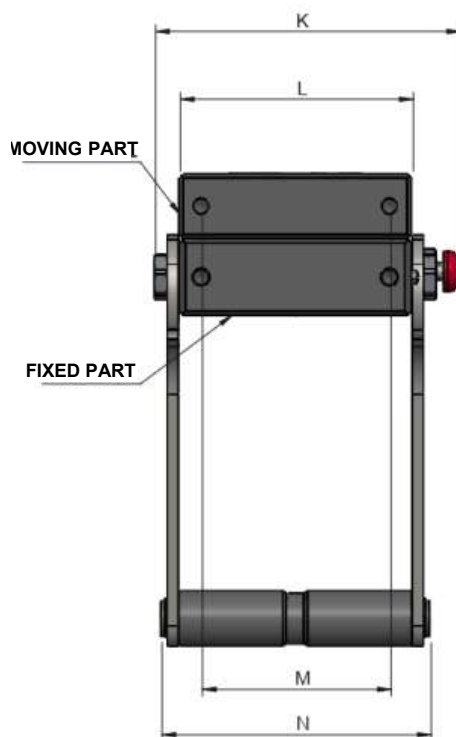
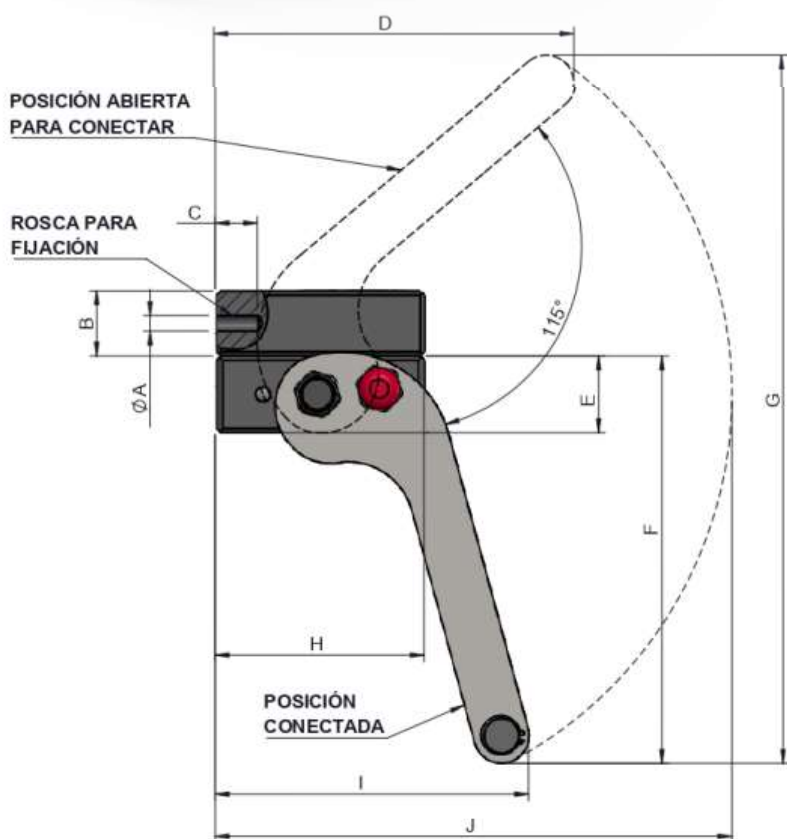
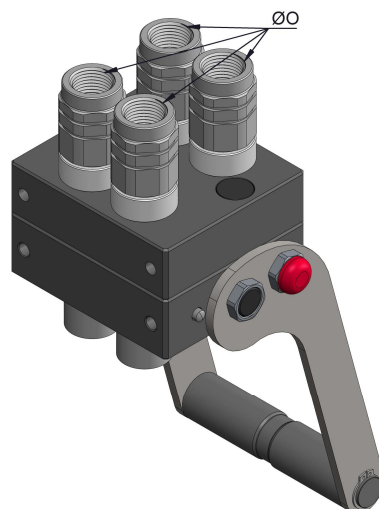
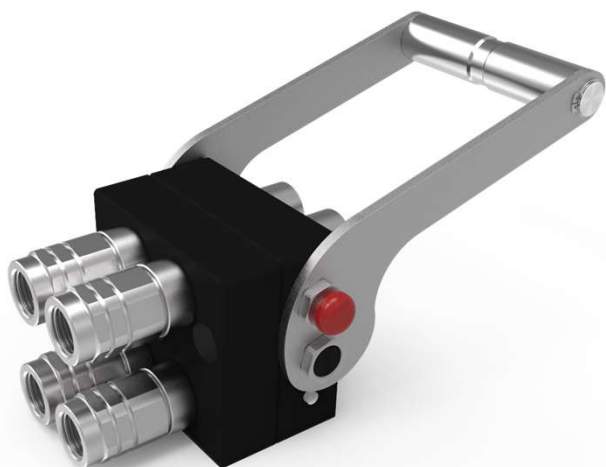
INTEVA reserves the right to make modifications to its products without prior notice. Any external or internal alterations to our products will automatically void the warranty.



# 5002 SERIES

## CPR MULTI-COUPLING

### MODEL STRUCTURE / DIMENSIONS

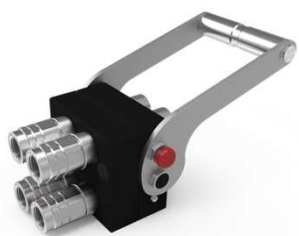


Nº CONNE.	ØO	REF.	Ø A	B	C	D	E	F	G	H	I	J	K	L	M	N
4	3/8" BSP	5002.61342AC	M8	29.3	19	162	34.5	183.2	318.6	94	141	232.5	137.4	105	85	121.5
	1/2" BSP	5002.61342AD														

5002-3

INTEVA reserves the right to make modifications to its products without prior notice. Any external or internal alterations to our products will automatically void the warranty.



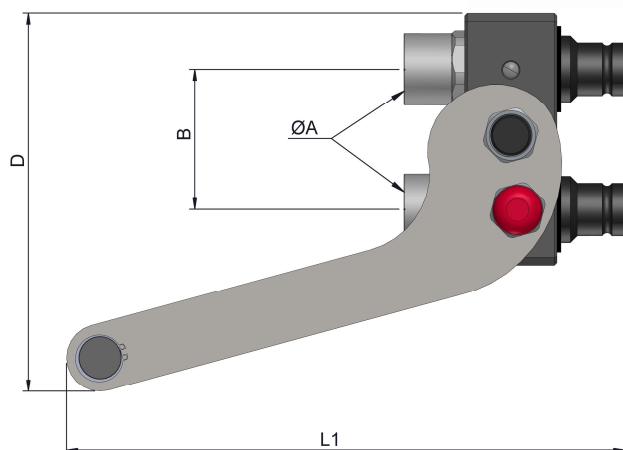
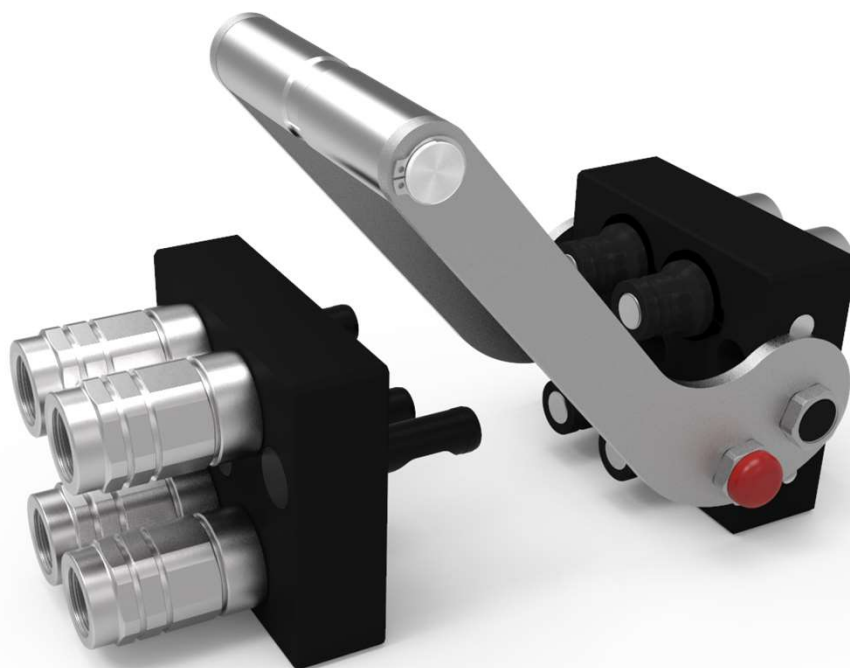


# 5002 SERIES

## CPR

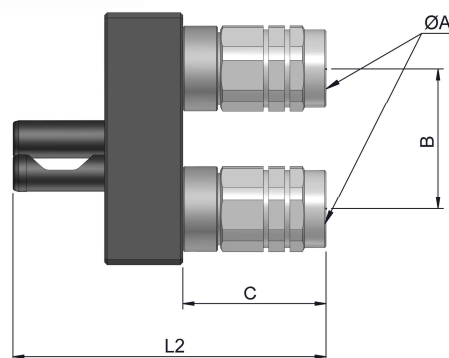
MULTI-COUPLING

### MODEL STRUCTURE



STANDARD MALE MODELS

(S)	ØA	REF.	B	D	L1
10	3/8" BSP	5002.61342AC-M	52.3	141	208.5
	1/2" BSP	5002.61342AD-M			



STANDARD FEMALE MODELS

(S)	ØA	REF.	C	L2
13	3/8" BSP	5002.61142AC-H	53.5	117
	1/2" BSP	5002.61142AD-H		

5002-4

INTEVA reserves the right to make modifications to its products without prior notice. Any external or internal alterations to our products will automatically void the warranty.

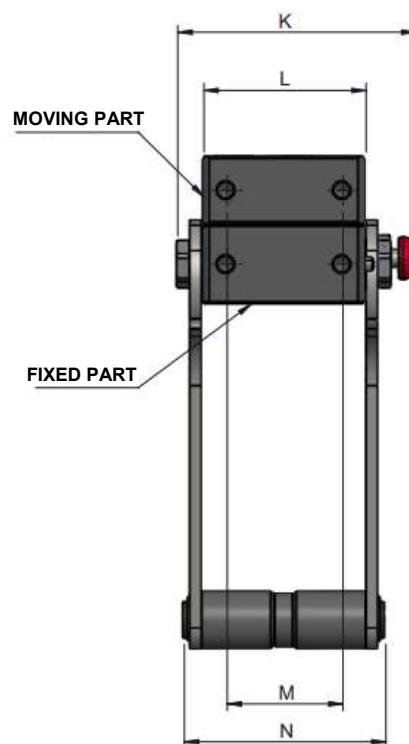
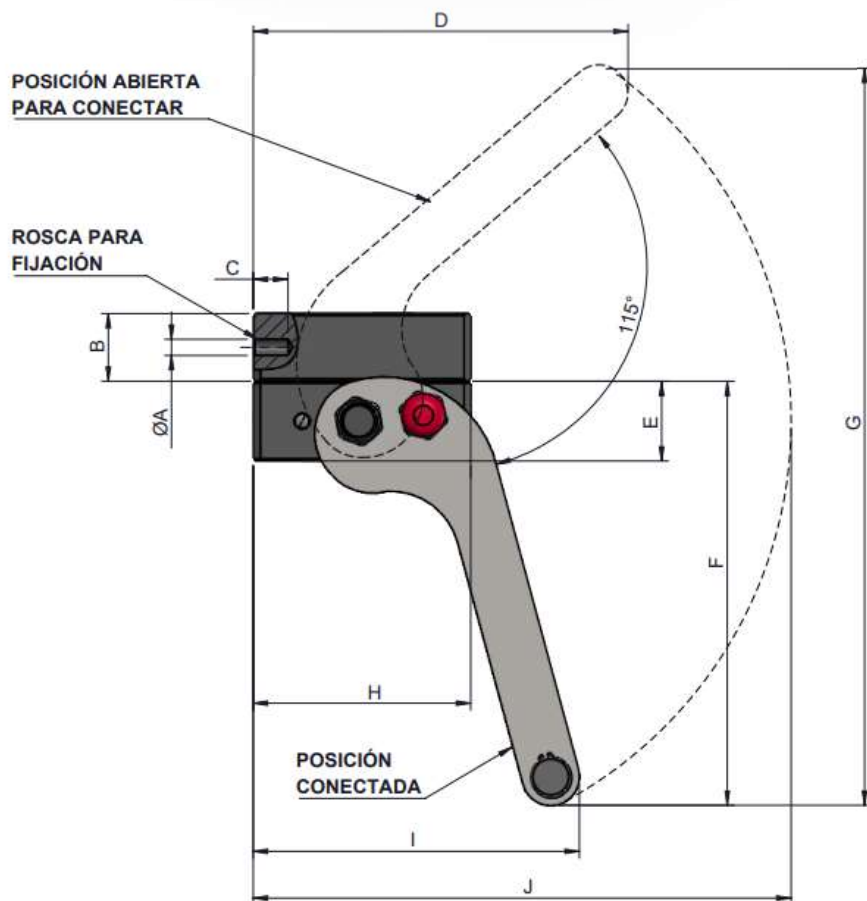
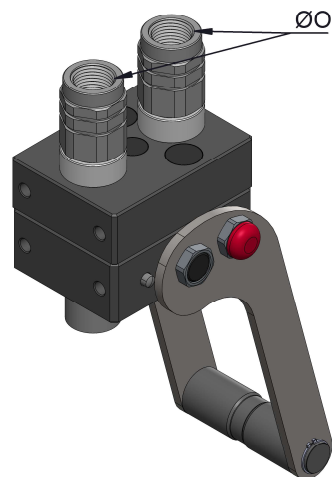
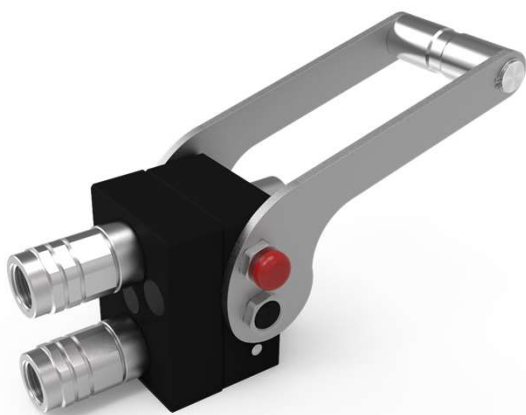




# 5002 SERIES

## CPR MULTI-COUPLING

### MODEL STRUCTURE / DIMENSIONS



Nº CONNE.	ØO	REF.	Ø A	B	C	D	E	F	G	H	I	J	K	L	M	N
2	3/8" BSP	5002.61322AC	M8	29.3	15	162	34.5	183.2	318.6	94	141	232.5	102.8	70	50	87
	1/2" BSP	5002.61322AD														

5002-1

INTEVA reserves the right to make modifications to its products without prior notice. Any external or internal alterations to our products will automatically void the warranty.



v12

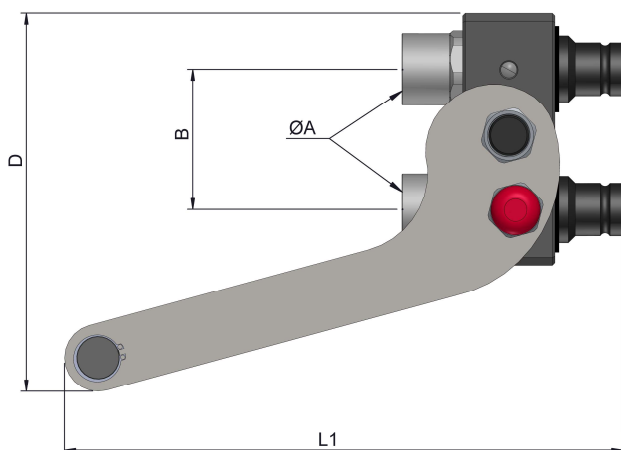
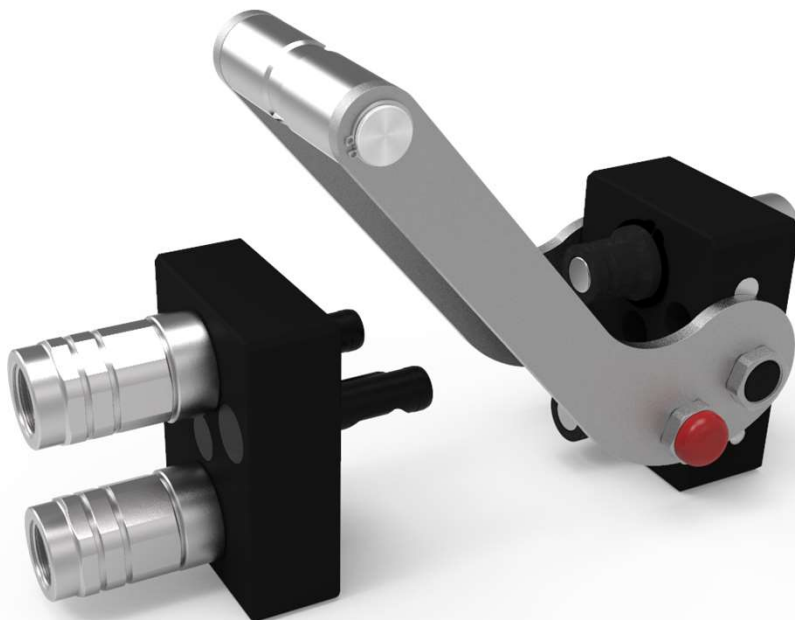




# 5002 SERIES

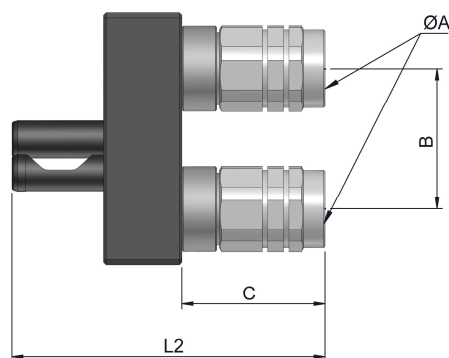
## CPR MULTI-COUPLING

### MODEL STRUCTURE



STANDARD MALE MODELS

(S)	ØA	REF.	B	D	L1
10	3/8" BSP	5002.61342AC-M	52.3	141	208.5
	1/2" BSP	5002.61342AD-M			



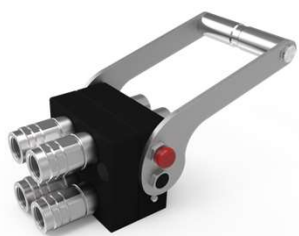
STANDARD FEMALE MODELS

(S)	ØA	REF.	C	L2
13	3/8" BSP	5002.61142AC-H	53.5	117
	1/2" BSP	5002.61142AD-H		

5002-6

INTEVA reserves the right to make modifications to its products without prior notice. Any external or internal alterations to our products will automatically void the warranty.





# 5002 SERIES

## CPR

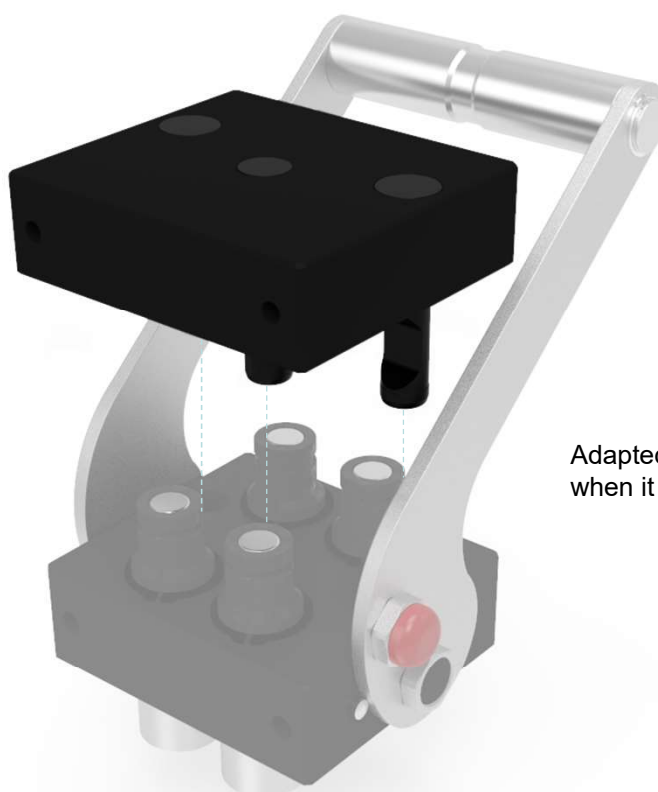
MULTI-COUPLING CAP

### MODEL STRUCTURE

Example:

**5002.61142HT**

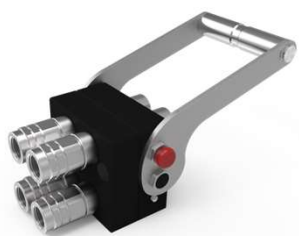
Series	Material	N° Connec	Size (S)	Part
5002	6 Aluminium	2 Connec. 4 Connec.	2 10 3/8"	HT Female cap



Adapted cover to protect the circuit from dirt when it is not connected.

**5002-7**

INTEVA reserves the right to make modifications to its products without prior notice. Any external or internal alterations to our products will automatically void the warranty.

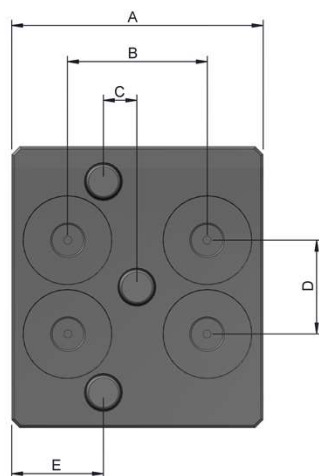
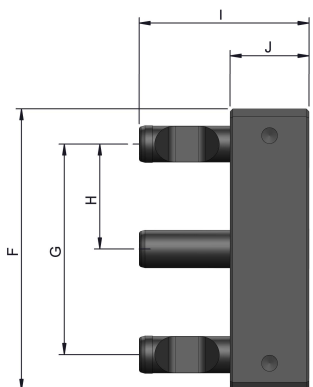
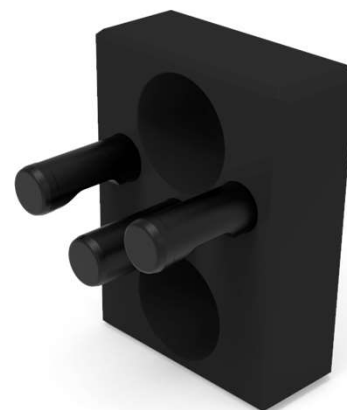
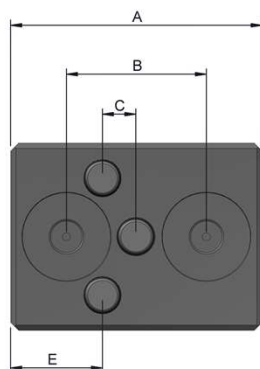
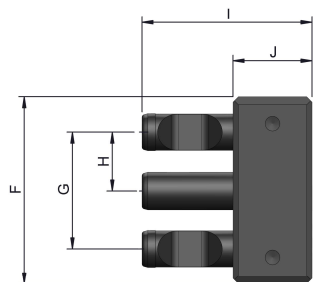


# 5002 SERIES

## CPR

MULTI-COUPLING CAP

### MODEL STRUCTURE/ DIMENSIONS



N° CONEX.	REF.	A	B	C	D	E	F	G	H	I	J
2	5002.61122HT	94	52.3	12.5	-	34.3	70	43.7	21.9	63.5	29.5
4	5002.61142HT				35		105	78.7	39.4		





# 131MS SERIES

## CPR

CARBON STEEL


Manufactured according to ISO 16028.

### TECHNICAL SPECIFICATIONS

<b>Operating pressure:</b>	Up to 350 Bar	
<b>Materials:</b>	Body:	Carbon Steel EN-10277-3
	O-rings:	NBR / VITON / EPDM
	Back-up-ring:	PTFE
	Springs:	EN 10270-1/SH
	Balls:	AISI 1010/1015
<b>Available Threads:</b>	BSP	
<b>Closing System:</b>	C.U.R.P.	
<b>Connection:</b>	Multi-coupling	
<b>Disconnection:</b>	Multi-coupling	
<b>Connection Under Pressure:</b>	Allowed	

**Available Size:** 3/8"

#### Working Temperature (O-rings)

	NBR	Viton	EPDM
	+100°C -30°C	+200°C -10°C	+150°C -40°C

**Sectors:** Industrial / Agricultural



**Applications:** Designed for Hydraulic Oil (Group II-2014/68/EU)

**Interchange:** STUCCHI FAP-P

### MODEL STRUCTURE

Example:

**131MS.11312 AD**

Series	Material	Part	Closing	O-rings	Size (S)	Threads
131MS.	1 Carbon S..	1 Male 2 Female	3 C.U.R.P	1 NBR 2 VITON 3 EPDM	2 10 : 3/8"	2 letters (see Table of Threads page 999-1)

**131MS-1**

INTEVA reserves the right to make modifications to its products without prior notice. Any external or internal alterations to our products will automatically void the warranty.



v12

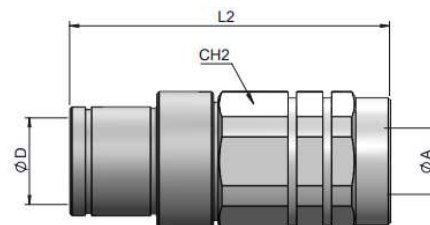
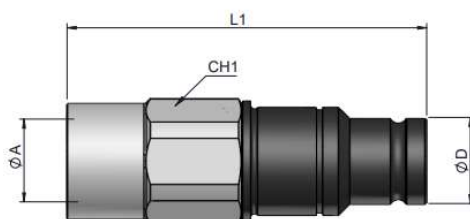


# 131MS SERIES

## CPR



CARBON STEEL

(S) 10



### STANDARD MALE MODELS

### STANDARD FEMALE MODELS

(S)	ØA	REF.		CH1	L1	ØD	REF.		CH1	L2	ØD
10	3/8" BSP	131MS.11312AC	350	27	82.5	19.8	131MS.12112AC	350	30	73.5	19.9
	1/2" BSP	131MS.11312AD					131MS.12112AD				

### QUICK COUPLER ASSEMBLY INSTRUCTIONS

Male and female attached to the structure with Seiger rings.



131MS-2

INTEVA reserves the right to make modifications to its products without prior notice. Any external or internal alterations to our products will automatically void the warranty.