

5001 SERIES

CPRM MULTI-COUPLING



Multi-coupling (CPRM)

CPRM Multi couplers allow the simultaneous connection of two or even four hydraulic lines. The connection can be made with residual pressure.

The design of the different components, makes the connection easy, just with a simple and low effort with the lever. It also has a locking system to avoid disconnection of both parts.

Also available a cover plate, to protect the circuit from dirt inclusion while disconnected.

TECHNICAL SPECIFICATIONS

Material: Aluminium / Steel

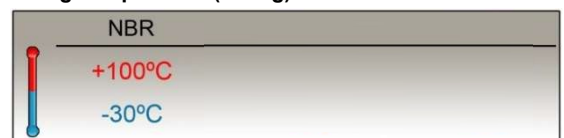
Seals: NBR

Size: 3/8"

Connections: 2 / 4

Connection under pressure: Allowed Residual

Working Temperature (O-ring)



Sectors: Vehicles / Agricultural / Industrial



5001-1

INTEVA reserves the right to make modifications to its products without prior notice. Any external or internal alterations to our products will automatically void the warranty.





5001 SERIES

CPRM MULTI-COUPLING

MODEL STRUCTURE

Example:

5001.61342MAD

Series	Material	Closing	N° Connec	Size (S)	Part	Thread
5001	6 Aluminun	3 C.U.R.P.	2 Conex. 4 Conex.	2 10 3/8"	M Male H Female	2 letters (see Table ofThreads page 999-1)



5001-2

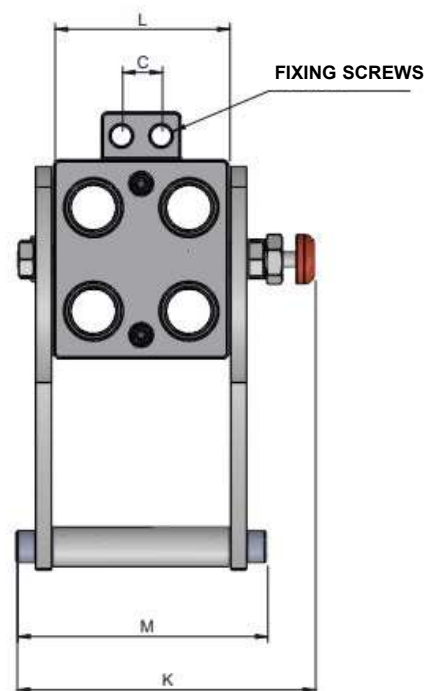
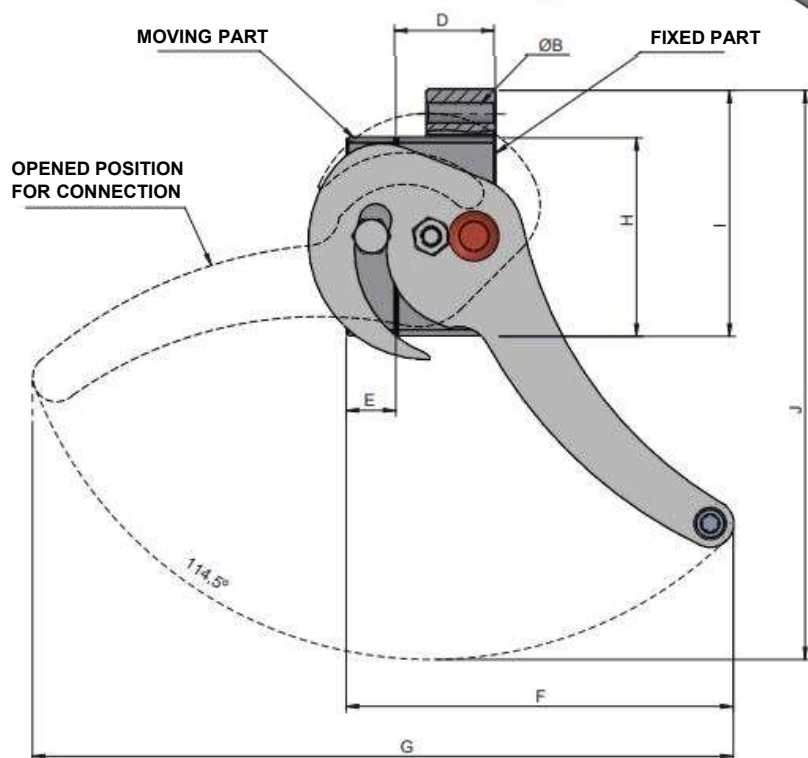
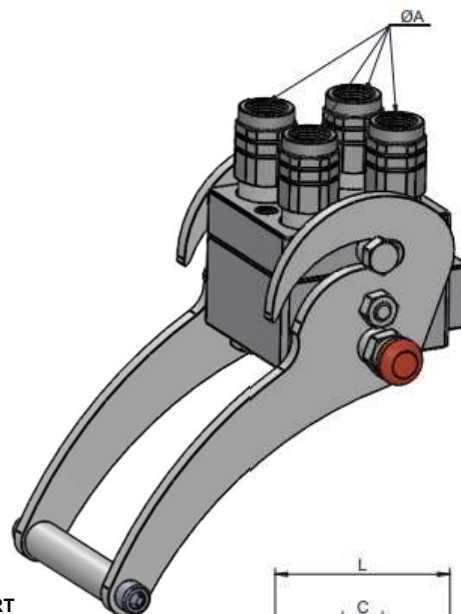
INTEVA reserves the right to make modifications to its products without prior notice. Any external or internal alterations to our products will automatically void the warranty.



5001 SERIES

CPRM MULTI-COUPLING

MODEL STRUCTURE / DIMENSIONS



N° CONNEC.	ØA	REF.	ØB	C	D	E	F	G	H	I	J	K	L	M
4	3/8" BSP	5001.61342AC	10.2	20	50	25	195	352.5	100	124	287	150	88	126
	1/2" BSP	5001.61342AD												

5001-3

INTEVA reserves the right to make modifications to its products without prior notice. Any external or internal alterations to our products will automatically void the warranty.

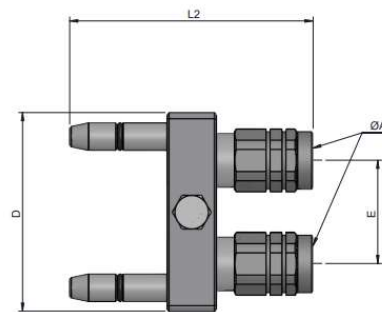
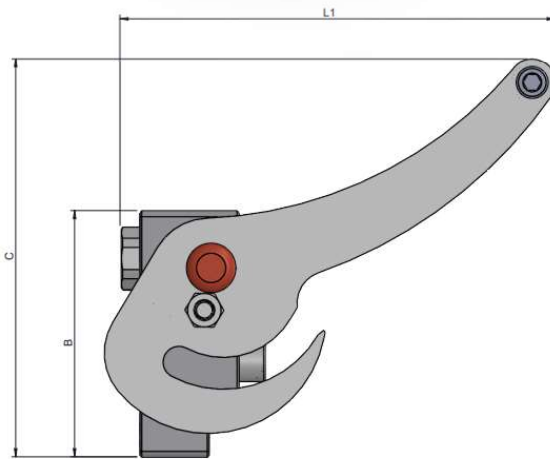




5001 SERIES

CPRM MULTI-COUPLING

MODEL STRUCTURE



STANDARD MALE MODELS

(S)	ØA	REF.	B	C	L1
10	3/8" BSP	5001.61342MAC	124	186	214
	1/2" BSP	5001.61342MAD			

STANDARD FEMALE MODELS

(S)	ØA	REF.	D	E	L2
13	3/8" BSP	5001.61142HAC	100	52	122.5
	1/2" BSP	5001.61142HAD			

5001-4

INTEVA reserves the right to make modifications to its products without prior notice. Any external or internal alterations to our products will automatically void the warranty.

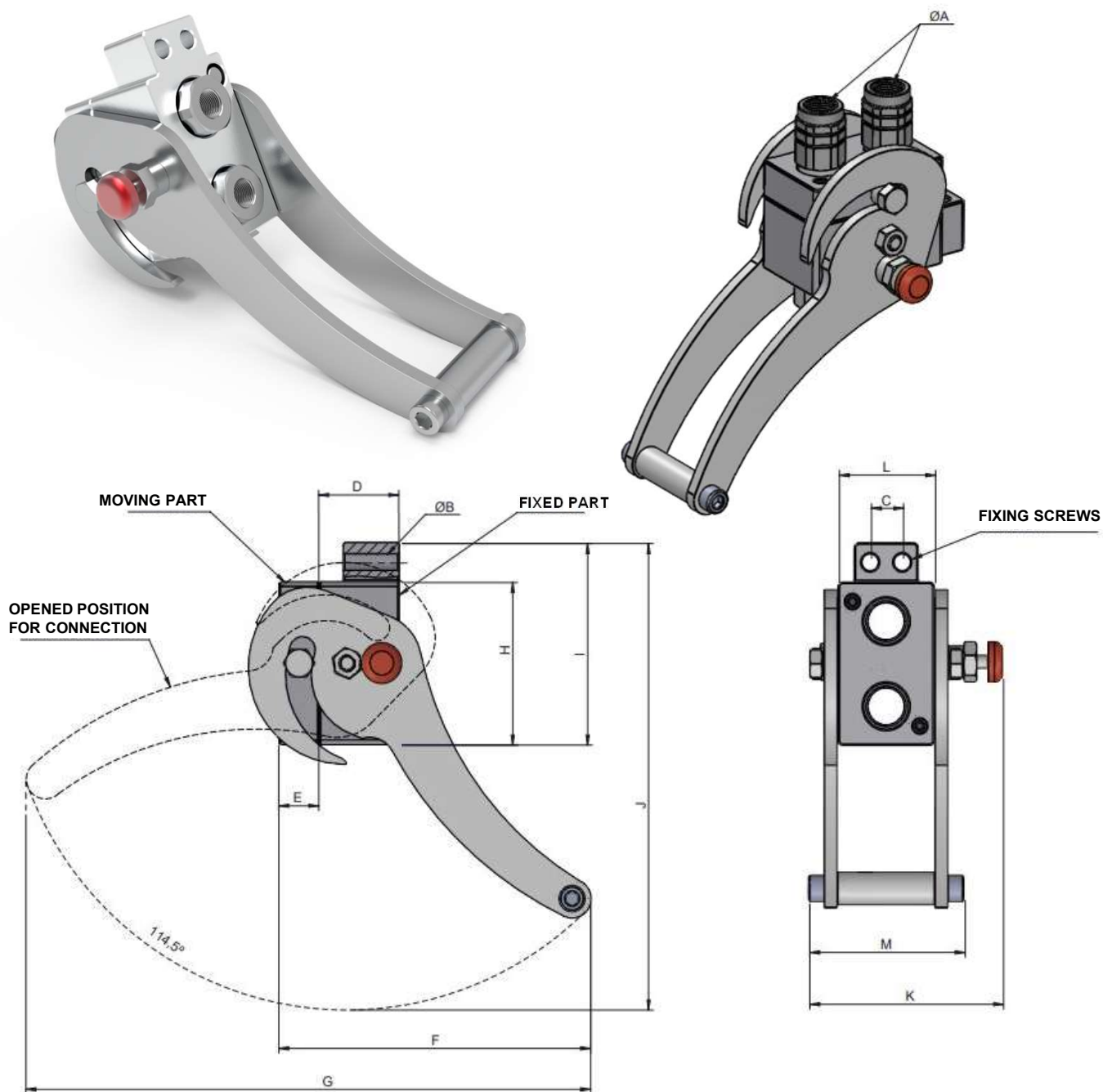




5001 SERIES

CPRM MULTI-COUPLING

MODEL STRUCTURE / DIMENSIONS



N° CONNEC.	ØA	REF.	ØB	C	D	E	F	G	H	I	J	K	L	M
2	3/8" BSP	5001.61322AC	10.2	20	50	25	195	352.5	100	124	287	121	60	97
	1/2" BSP	5001.61322AD												

5001-5

INTEVA reserves the right to make modifications to its products without prior notice. Any external or internal alterations to our products will automatically void the warranty.

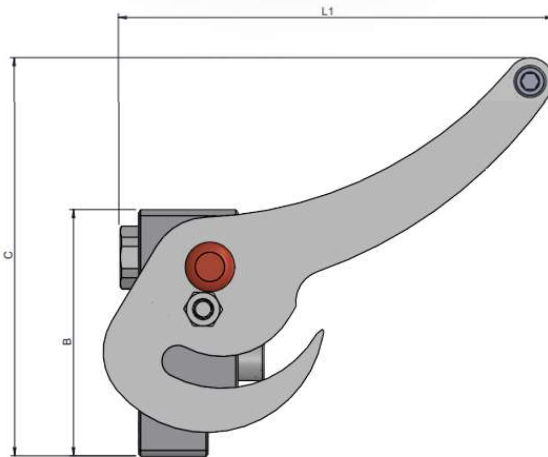




5001 SERIES

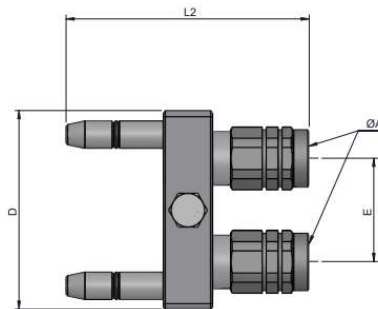
CPRM MULTI-COUPLING

MODEL STRUCTURE



STANDARD MALE MODELS

(S)	ØA	REF.	B	C	L1
10	3/8" BSP	5001.61322MAC	124	186	214
	1/2" BSP	5001.61322MAD			



STANDARD FEMALE MODELS

(S)	ØA	REF.	D	E	L2
13	3/8" BSP	5001.61122HAC	100	56	122.5
	1/2" BSP	5002.61122HAD			

5001-6

INTEVA reserves the right to make modifications to its products without prior notice. Any external or internal alterations to our products will automatically void the warranty.





5001 SERIES

CPRM

MULTI-COUPLING CAP

MODEL STRUCTURE

Example:

5001.61142HT

Series	Material	N° Connect	Size (S)	Part
5001	6 Aluminium	2 Connect. 4 Connect.	2 10 3/8"	HT Female cap



Adapted cover to protect the circuit from dirt when it is not connected.

5001-7

INTEVA reserves the right to make modifications to its products without prior notice. Any external or internal alterations to our products will automatically void the warranty.



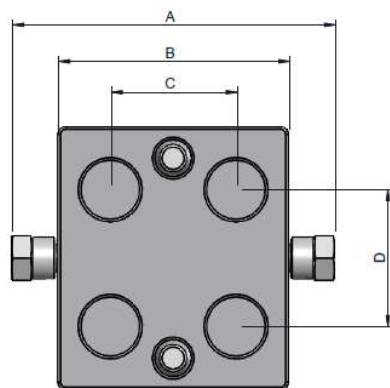
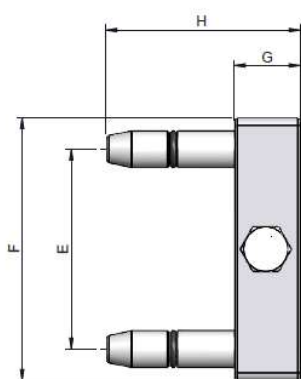
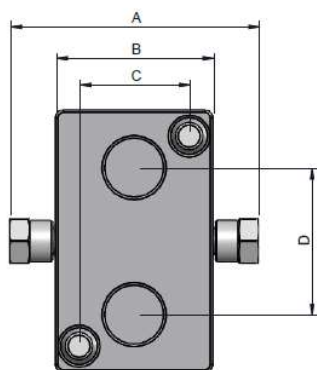
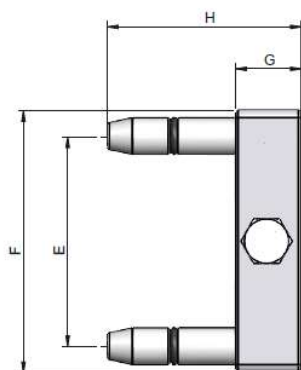


5001 SERIES

CPRM

MULTI-COUPLING CAP

MODEL STRUCTURE/ DIMENSIONS



N° CONNECT.	REF.	A	B	C	D	E	F	G	H
2	5001.61122HT	95	60	42	56	80	100	25	74
4	5001.61142HT	123	88	48	52	76			

5001-8

INTEVA reserves the right to make modifications to its products without prior notice. Any external or internal alterations to our products will automatically void the warranty.



v12



131MR SERIES

CPRM

CARBON STEEL


Manufactured according to ISO 16028.

TECHNICAL SPECIFICATIONS

Operating pressure:	Up to 350 Bar	
Materials:	Body:	Carbon Steel EN-10277-3
	O-rings:	NBR / VITON / EPDM
	Back-up-ring:	PTFE
	Springs:	EN 10270-1/SH
	Balls:	AISI 1010/1015
Available Threads:	BSP	
Closing System:	C.U.R.P.	
Connection:	Multi-coupling	
Disconnection:	Multi-coupling	
Connection Under Pressure:	Allowed residual pressure	

Available Size: 3/8"

Working Temperature (O-rings)

	NBR	Viton	EPDM
	+100°C -30°C	+200°C -10°C	+150°C -40°C

Sectors: Industrial / Agricultural



Applications: Designed for Hydraulic Oil (Group II-2014/68/EU)

Interchange:

MODEL STRUCTURE

Example:

131MR.11312 AD

Series	Material	Part	Closing	O-rings	Size (S)	Threads
131MS.	1 Carbon S..	1 Male 2 Female	3 C.U.R.P	1 NBR 2 VITON 3 EPDM	2 10 : 3/8"	2 letters (see Table of Threads page 999-1)

131MR-1

INTEVA reserves the right to make modifications to its products without prior notice. Any external or internal alterations to our products will automatically void the warranty.



v12

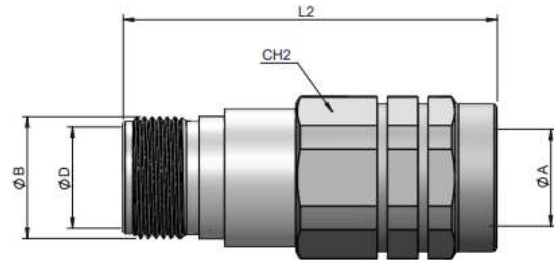
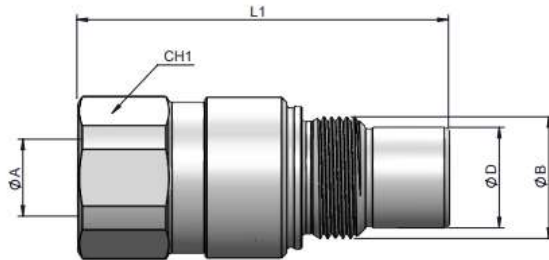


131MR SERIES

CPRM

CARBON STEEL

(S) 10



STANDARD MALE MODELS

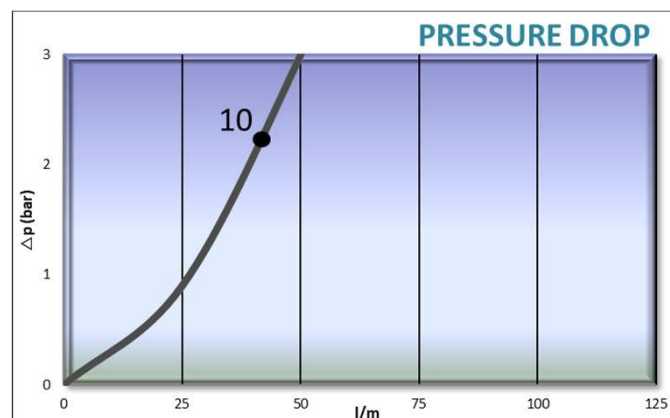
(S)	ØA	REF.		CH1	L1	ØB	ØD		REF.		CH2	L2	ØB	ØD
10	3/8" BSP	131MR.11312AC		30	73	M24x1.5	19.8		131MR.12112AC		30	73.5	M24x1.5	19.9
	1/2" BSP	131MR.11312AD							131MR.12112AD					

STANDARD FEMALE MODELS

TECHNICAL DATA

(S)	Rated Flow	Min. Burst Pressure (Bar)			Max. Working Pressure
		Male	Female	Coupled	
10	45 l/m	1020	1100	1000	350

Test performed according to ISO 18869



131MR-2

INTEVA reserves the right to make modifications to its products without prior notice. Any external or internal alterations to our products will automatically void the warranty.





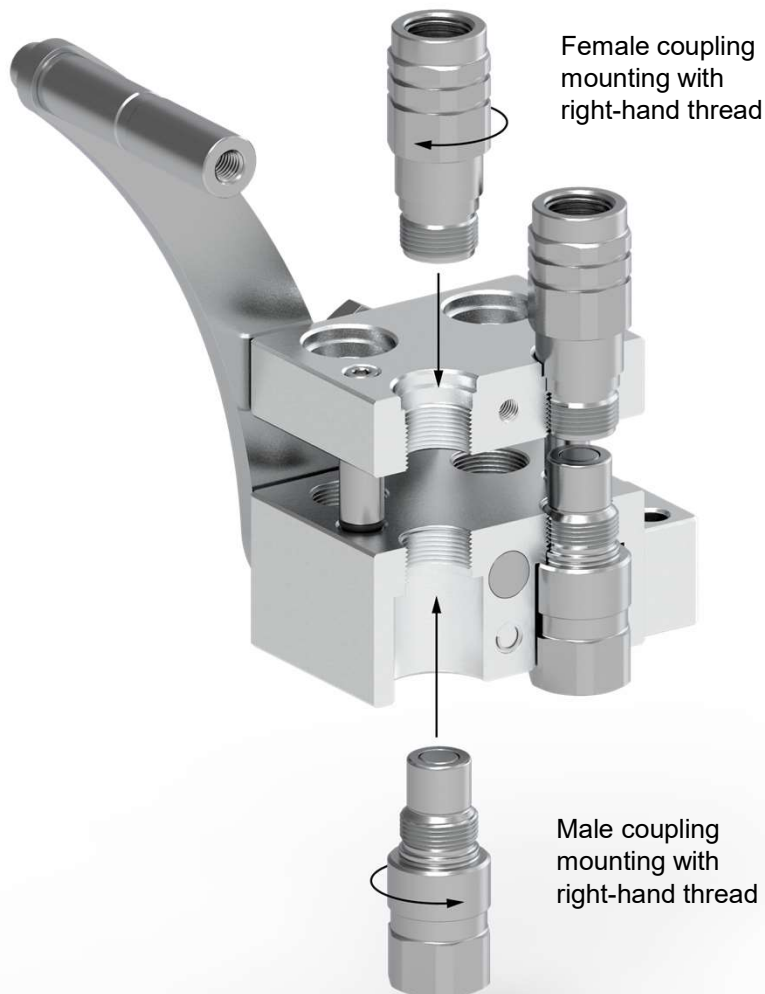
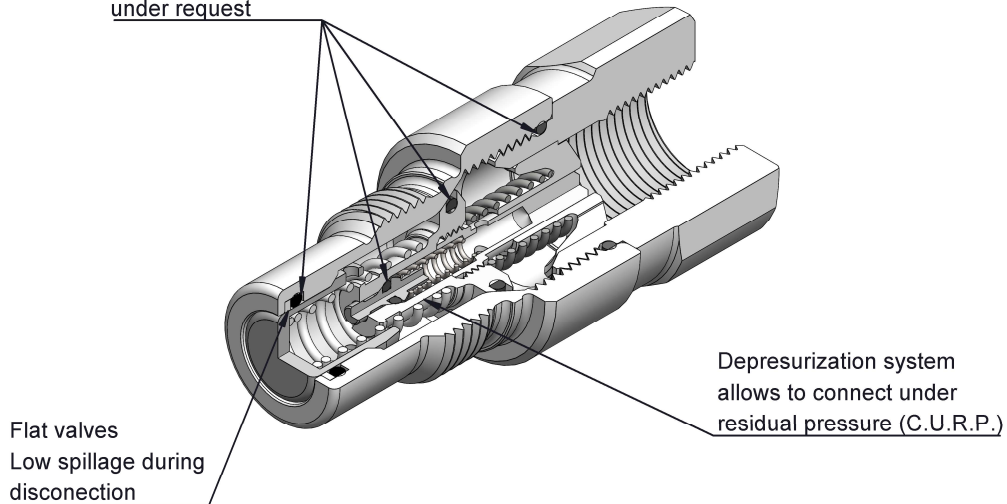
131MR SERIES

CPRM

CARBON STEEL

QUICK COUPLER ASSEMBLY INSTRUCTIONS

NBR Seals,
Viton, EPDM, Karlez
under request



131MR-3

INTEVA reserves the right to make modifications to its products without prior notice. Any external or internal alterations to our products will automatically void the warranty.