



140 SERIES CVF



Free flow (without valve)
BSP Threads, other threads available upon request.

• Materials

Carbon Steel EN -10277-3 /AISI 316L/ Brass

Seals: NBR, Viton or EPDM

Back-up-ring: PTFE

Balls: AISI 1010/1015

Springs: Carbon Steel DIN 17233/84(B)

• **Applications:** Designed for Oil hydraulic Applications according to European Directive 97.23.EC

• Equivalence

GROMELLE 7000

• Working temperature (Seals)

	NBR	Viton	EPDM
+	+100°C	+200°C	+150°C
-	-30°C	-10°C	-40°C

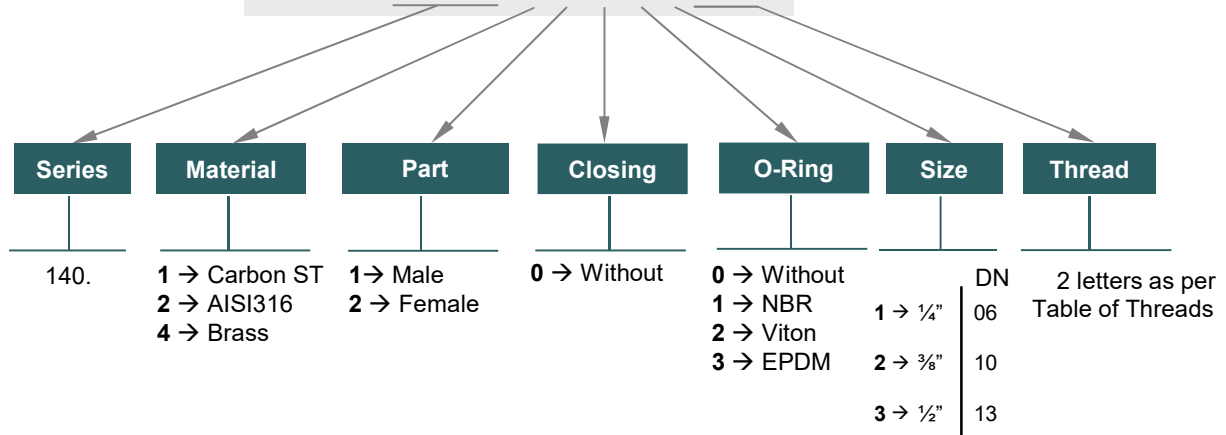
• **Sectors:** Industrial, High pressure cleaning systems



MODEL STRUCTURE

Example:

140.11001 AB



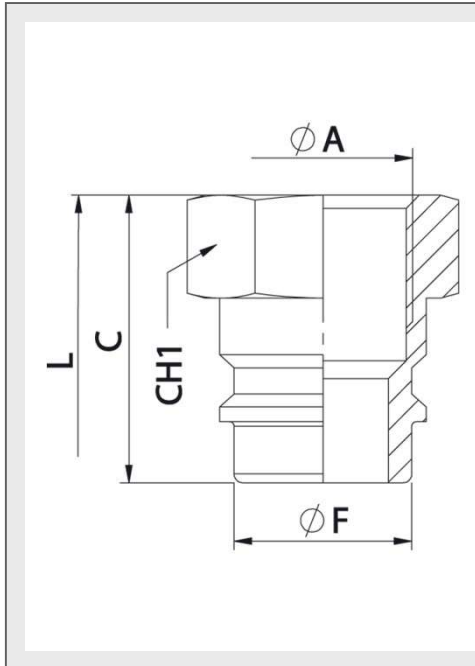
140-1




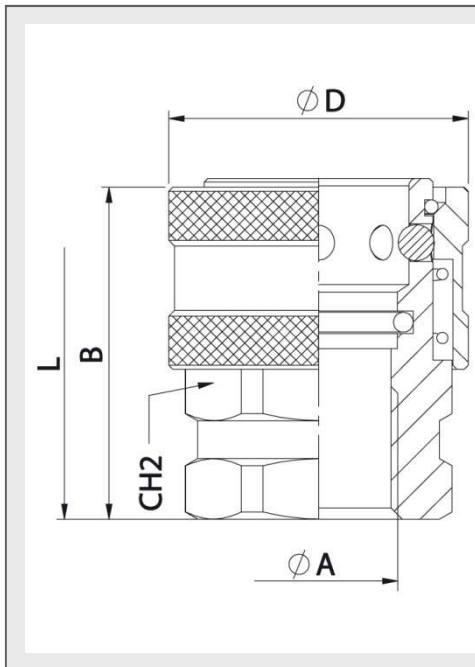
140 SERIES CVF




Quick couplings upon request and subjected to minimum quantities.
Nickel-palated product → add 011 at the end of the reference.



MALE (CARBON ST.)							
DN	ØA	CH1	C	ØF	L	REF.	
06	1/4" BSP	19	25	14,10	45,10	140.11001AB	700 Bar
10	3/8" BSP	22	28	18,90	48,50	140.11002AC	600 Bar
13	1/2" BSP	27	33	20,40	55,50	140.11003AD	500 Bar



FEMALE (CARBON ST.)							
DN	ØA	CH2	B	ØD	L	REF.	
06	1/4" BSP	22	35	29,50	45,10	140.12011AB	700 Bar
10	3/8" BSP	27	38	34	48,50	140.12012AC	600 Bar
13	1/2" BSP	32	45	39,50	55,50	140.12013AD	500 Bar



140 SERIES

CVF PLUGS & CAPS



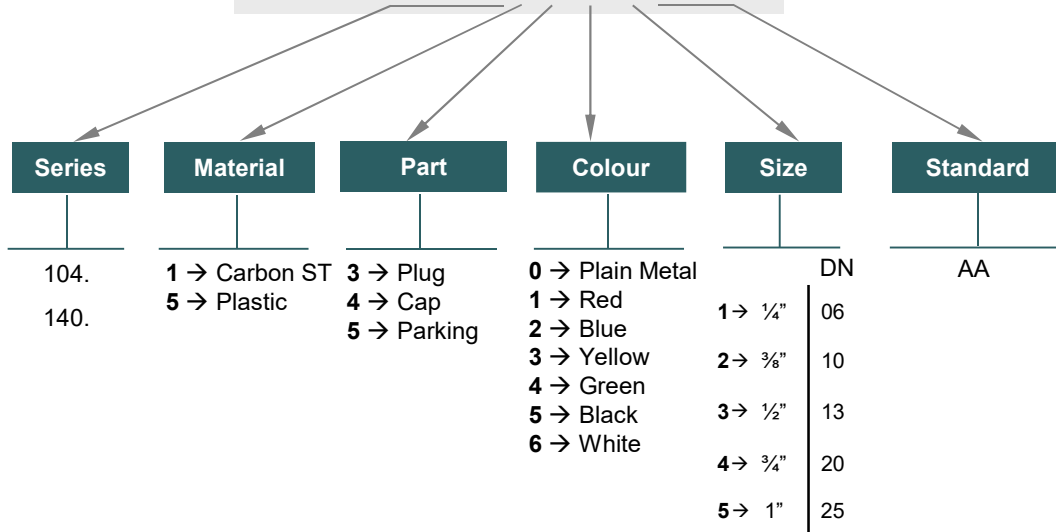
DIN SERIES PLUGS/ CAPS have been designed to protect FEMALE (coupler) or MALE (nipple) parts while they are disconnected.
 They have been manufactured according to ISO 5675 norm, DN13 size meets also ISO7241-A requirements


MODEL STRUCTURE

For plugs and caps

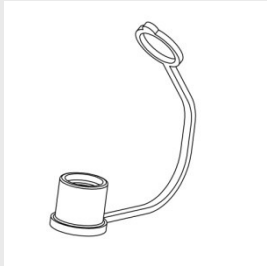
Example:

104.5353 AA





PLUG						
DN	RED	BLUE	YELLOW	GREEN	BLACK	WHITE
06	*	*	*	*	104.5351AA	*
10	*	*	*	*	104.5352AA	*
13	*	*	*	*	101.5353AA	*
20	*	*	*	*	104.5354AA	*
25	*	*	*	*	104.5355AA	*



CAP						
DN	RED	BLUE	YELLOW	GREEN	BLACK	WHITE
06	*	*	*	*	104.5451AA	*
10	*	*	*	*	104.5452AA	*
13	*	*	*	*	101.5453AA	*
20	*	*	*	*	104.5454AA	*
25	*	*	*	*	104.5455AA	*

* NOT AVAILABLE