



105 SERIES PSH



Manufactured according to ISO 7241-A and ISO 5675 norms.
Poppet Valve or Ball closing system.
BSP, NPTF, SAE/ORB threads. Other threads available upon request.

• Materials

Carbon Steel EN -10277-3
Seals: NBR, Viton or EPDM
Back-Up-Ring: PTFE
Balls: AISI 1010/1015
Springs: Carbon Steel
DIN 17233/84(B)

• Working temperature (Seals)

| NBR o-rings | Viton o-rings | EPDM o-rings |
|-------------|---------------|--------------|
| +100°C | +200°C | +150°C |
| -30°C | -10°C | -40°C |

- **Applications:** Designed for Oil hydraulic Applications according to European Directive 97.23.EC

• Equivalence

FASTER PV / CPV
ARGUS SVK
PARKER 4200

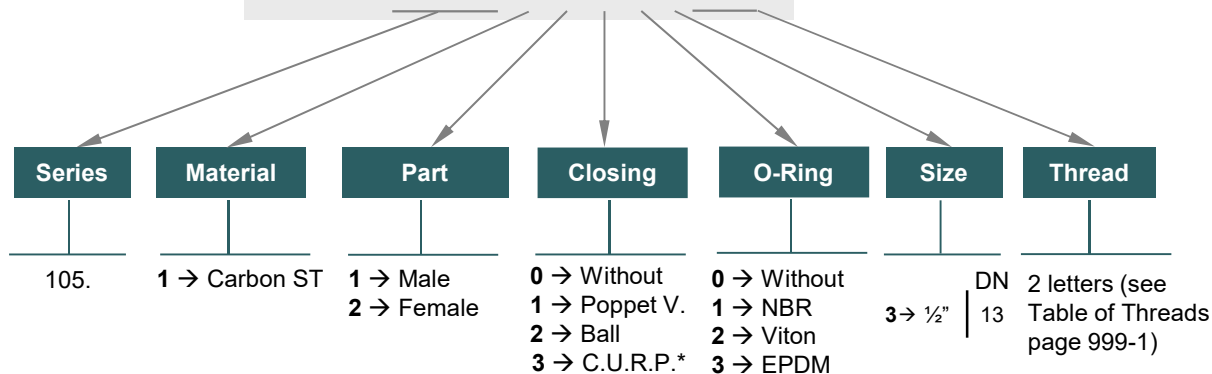
- **Sectors:** Industrial, Agricultural



MODEL STRUCTURE

Example:

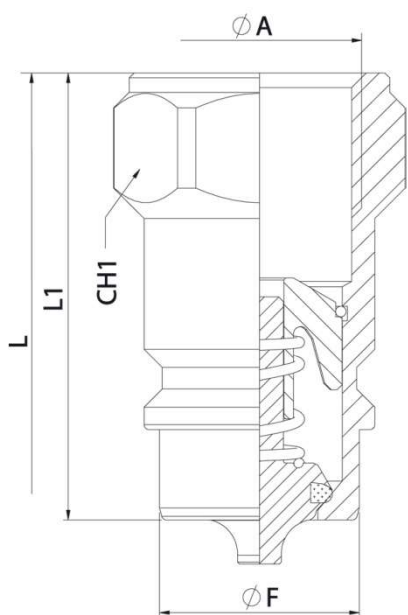
105.11113 BD



* DN13 available only.



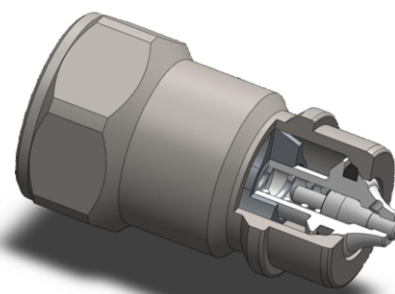
105 SERIES PSH



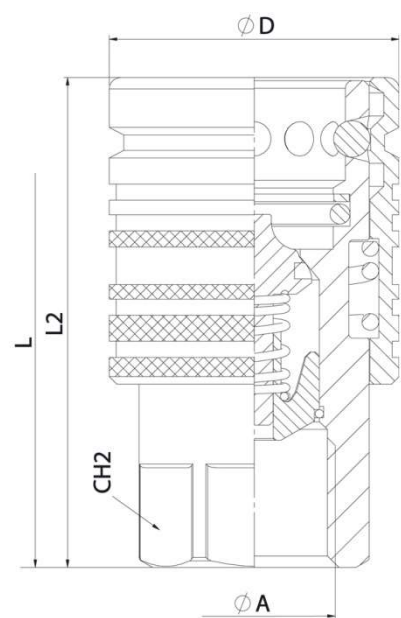
| MALE | | | | |
|------|-----|----|-------|-------|
| DN | CH1 | L1 | ØF | L |
| 13 | 27 | 46 | 20,56 | 87,50 |
| | | 48 | | 89,50 |
| | 30 | 50 | | 91,50 |

STANDARD MALE MODELS

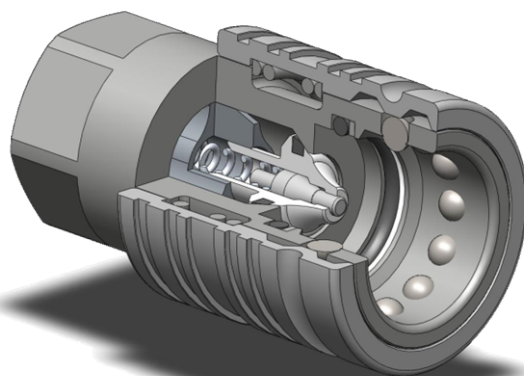
| DN | ØA | MALE | |
|----|--------------|-------------|--------|
| 13 | 1/2" BSP | 101.11113AD | 300Bar |
| | 1/2" NPTF | 101.11113BD | |
| | M22x1,5 | 101.11113NG | |
| | 3/4" - 16ORB | 101.11113GF | |
| | 7/8" 14ORB | 101.11113GH | |



C.U.R.P. connection is available in DN13
Up to 300 Bar.

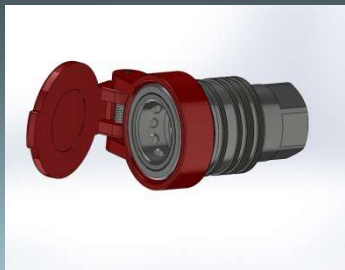


| FEMALE | | | | |
|--------|-----|-------|-------|-------|
| DN | CH2 | L2 | ØD | L |
| 13 | 27 | 63,50 | 37,80 | 87,50 |



STANDARD FEMALE MODELS

| DN | ØA | FEMALE | |
|----|-----------|-------------|--------|
| 13 | 1/2" BSP | 105.12113AD | 300Bar |
| | 1/2" NPTF | 105.12113BD | |
| | M22x1,5 | 105.12113NG | |



105 SERIES

PSH

PLUGS &
CAPS



PSH SERIES PLUGS/ CAPS have been designed to protect **FEMALE** (coupler) or **MALE** (nipple) parts while they are disconnected.

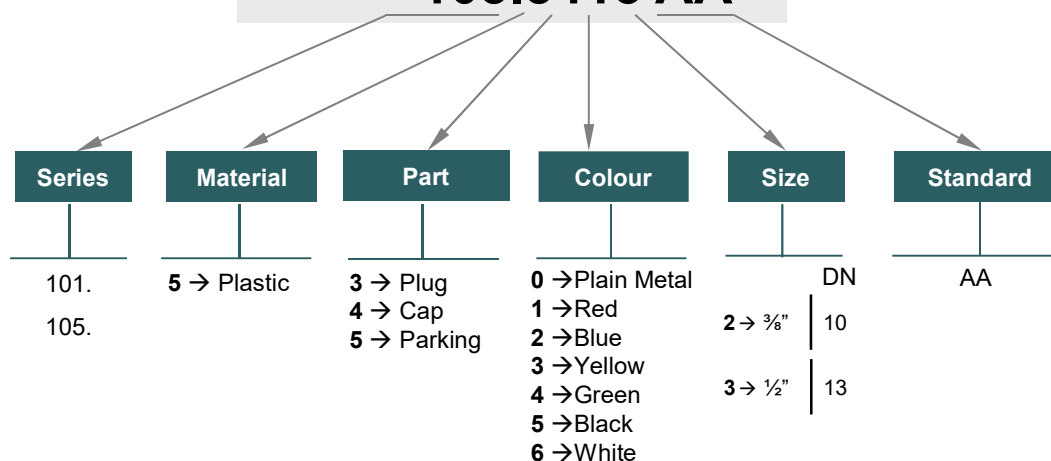
Manufactured according to ISO 7241-A norm, DN13 size meets as well ISO 5675 requirements.

MODEL STRUCTURE

For plugs/caps and parking parts

Example:

105.5413 AA



| CAP | | | | | | |
|-----|------------|------|--------|-------|-------|-------|
| DN | RED | BLUE | YELLOW | GREEN | BLACK | WHITE |
| 10 | 105.5412AA | * | * | * | * | * |
| 13 | 105.5413AA | * | * | * | * | * |



| PLUG | | | | | | |
|------|------------|------|--------|-------|-------|-------|
| DN | RED | BLUE | YELLOW | GREEN | BLACK | WHITE |
| 10 | 101.5312AA | * | * | * | * | * |
| 13 | 101.5313AA | * | * | * | * | * |



| CAP | | | | | | |
|-----|------------|------|--------|-------|-------|-------|
| DN | RED | BLUE | YELLOW | GREEN | BLACK | WHITE |
| 10 | 101.5412AA | * | * | * | * | * |
| 13 | 101.5413AA | * | * | * | * | * |

* Other colors available upon request.

105-3