



206 SERIES SRK

CARBON STEEL
DIN 2353 (ISO 8434-1)

NEW

BEFORE

- **HIGHT RESISTANCE ZINC CrIII**
- **500 hrs*** of resistance to Red Corrosion according to ISO 9227 NSS (Salt Spray)
- Silver-gray **COLORATION**



NOW

- **ZINC-NICKEL**
- **1.500 hrs*** of resistance to Red Corrosion according to ISO 9227 NSS (Salt Spray)
- Iridescent matte gray **COLORATION**



The coating applied to the 206 series (SRK) is updated, changing from High Resistance Zinc CrIII to Zinc-Nickel.

Thanks to Zinc-Nickel, corrosion resistance is increased, with a durability of 1.500 hours in salt spray (NSS), according to the ISO 9227 standard.

CHARACTERISTICS

Zinc – Nickel

Metal	Design.	Description	Coloration	Standards	Salt spray resistance (ISO 9227)	
					Red corrosion (hrs)	White corrosion (hrs)
Zinc-Nickel	Fe/Zn-Ni	Zinc Alloy with Passivated Nickel CrIII RoHS	Iridescent matte gray	ISO 15726	1500	120-240

* The variation in corrosion resistance hours is influenced by the coating thickness and the application method employed, whether through barrel or static techniques.

206-1

INTEVA reserves the right to make modifications to its products without prior notice. Any external or internal alterations to our products will automatically void the warranty.





206 SERIES SRK



TECHNICAL SPECIFICATIONS

Features:

INTEVA's SRK couplings are used to connect hydraulic lines without air inclusion in the circuit and without loss of medium during disconnection. These couplings are possible to connect by hand up to around 20Bar residual pressure; when a tool is used, the coupling can also be connected / disconnected even when subjected to higher residual pressure.

Threaded connection eliminates brinellization.

Working Pressure:

Up to 420 Bar

Materials:

Body: Carbon Steel EN -10277-3
Stainless Steel 316

O-rings: NBR / VITON / EPDM

Back-up-ring: PTFE

Springs: EN 10270-1/SH

Balls: -

Treatment:

Zinc Nickel (1.500h r.p. ISO 9227 NSS)

Available Threads:

DIN 2353 (ISO 8434-1)*

Closing System:

Flat Face

Connection/Disconnection:

Screw on / off both parts

Connection Under Pressure:

Residual pressure

Available Size: 3/8" a 1 1/4"

Working Temperature (O-rings)

NBR	Viton	EPDM
+100°C	+200°C	+150°C
-30°C	-10°C	-40°C

Sectors: Industrial / Agricultural / Construction machinery



Applications: Designed for Hydraulic Oil (Group II-2014/68/EU)

Interchange: ARGUS SERIE Rh /
VOSWINKEL SERIE RK

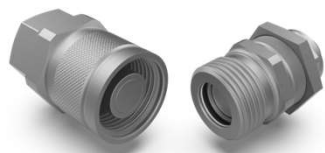
* Others available upon request

MODEL REFERENCE

Example:

206.12115 AF

Series	Material	Part	Closing	O-rings	Size (S)	Thread
206.	1 Carbon St.	1 Male	0 Without	0 Without	2 10	3/8" 2 letters (see Thread Table on page 999-1)
	2 SS316	2 Female	1 Flat	1 NBR	3 13	
				2 VITON	4 20	
				3 EPDM	5 25	
					6 32	

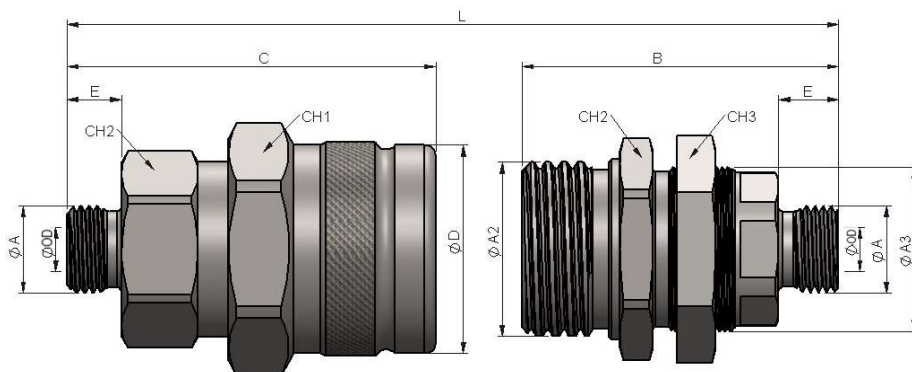


206 SERIES SRK

CARBON STEEL
DIN 2353 (ISO 8434-1)



INTEVA

(S) 10 - 3/8"

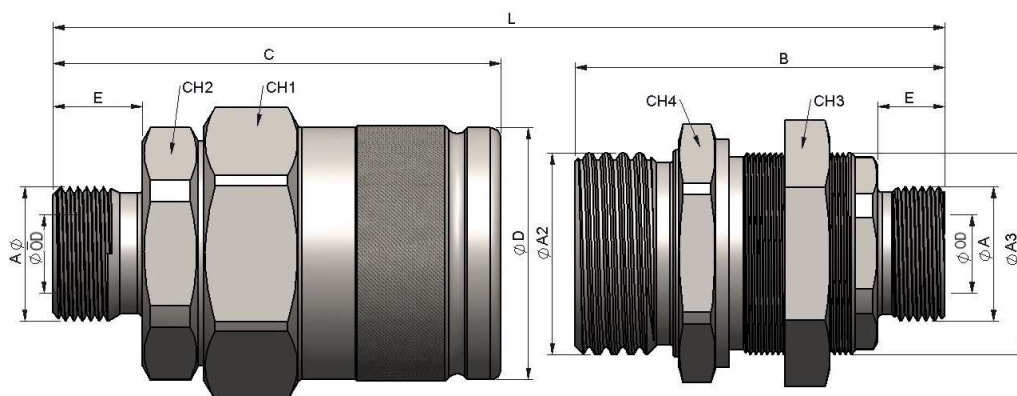


STANDARD MALE MODELS

STANDARD FEMALE MODELS



(S)	ØA	OD	E	L	REF.		CH1	CH2	C	ØD	REF.		ØA2	ØA3	CH2	CH3	B
10	M14x1.5	8L	10	111.5	206.11112JC	420	41	32	67.5	38	206.12112JC	420	Rd 32x3	M30x1	36	36	58
	M16x1.5	10L	11		206.11112JD												
	M18x1.5	12L	11		206.11112JE												
	M18x1.5	10S	12		206.11112KE												
	M20x1.5	12S	12		206.11112KF												
	M22x1.5	15L	12		206.12112JG												
	M22x1.5	14S	12		206.12112KG												
	M24x1.5	16S	14		206.12112KH												

(S) 13 - 1/2"



STANDARD MALE MODELS

STANDARD FEMALE MODELS

(S)	ØA	OD	E	L	REF.		CH1	CH2	C	ØD	REF.		ØA2	ØA3	CH2	CH3	B
13	M18x1.5	12L	11	127.5	206.11113JE	420	46	41	70.5	44.8	206.12113JE	420	Rd 36x3	M36x1	41	41	66
	M22x1.5	15L	12		206.11113JG												
	M22x1.5	14S	12		206.11113KG												
	M24x1.5	16S	14		206.12113KH												
	M26x1.5	18L	12		206.12113JI												
	M30x2.0	20S	16		206.12113KJ												

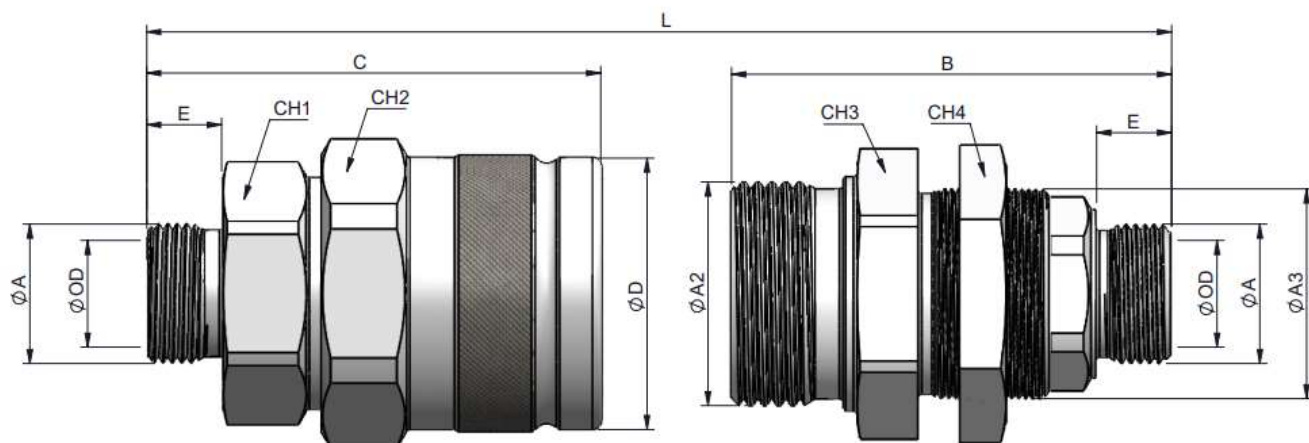


206 SERIES SRK

CARBON STEEL
DIN 2353 (ISO 8434-1)

INTEVA

(S) 20 - 3/4"

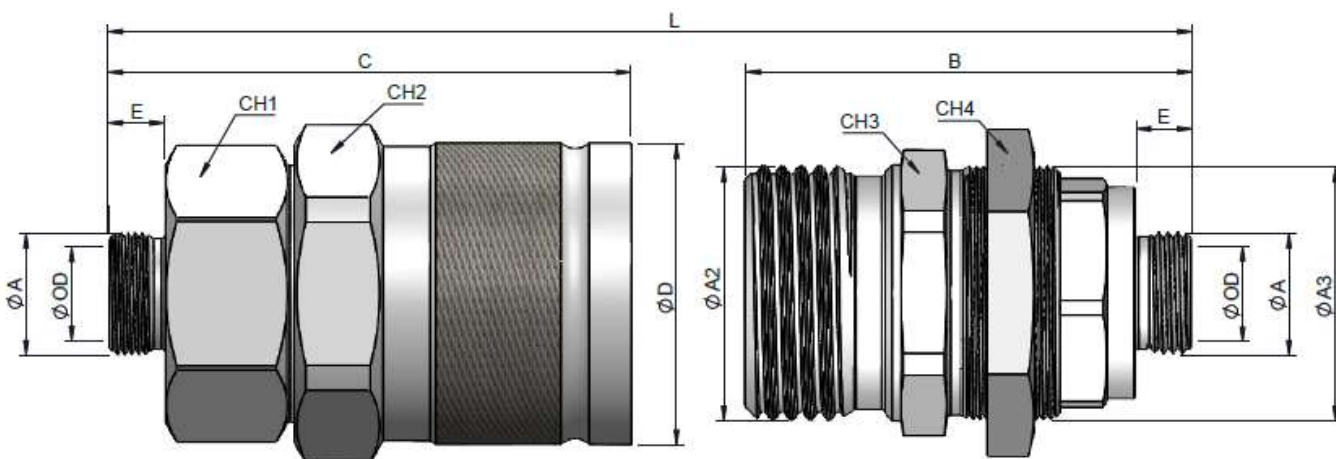


STANDARD MALE MODELS

STANDARD FEMALE MODELS


(S)	ØA	OD	E	L	REF.		CH1	CH2	C	ØD	REF.		ØA2	ØA3	CH3	CH4	B
20	M26x1.5	18L	12	169	206.11114JI		420	50	60	97	58	420	Rd 48x3	M45x1.5	55	55	94
	M30x2.0	22L	14		206.11114JJ												
	M30x2.0	20S	16		206.11114KJ												
	M24x1.5	16S	14		206.11114KH												
	M36x2.0	25S	18		206.11114KK												

(S) 25 - 1"



STANDARD MALE MODELS

STANDARD FEMALE MODELS

(S)	ØA	OD	E	L	REF.		CH1	CH2	C	ØD	REF.		ØA2	ØA3	CH3	CH4	B
25	M26x1.5	18L	12	178	206.11115JI	350	55	65	111.5	64	206.12115JI	350	Rd 54x4	M54x1.5	55	60	95
	M30x2.0	22L	14		206.11115JJ												
	M36x2.0	28L	14		206.11115JK												
	M30x2.0	20S	16		206.11115KJ												
	M36x2.0	25S	18		206.11115KK												
	M42x2.0	30S	20		206.11115KL												

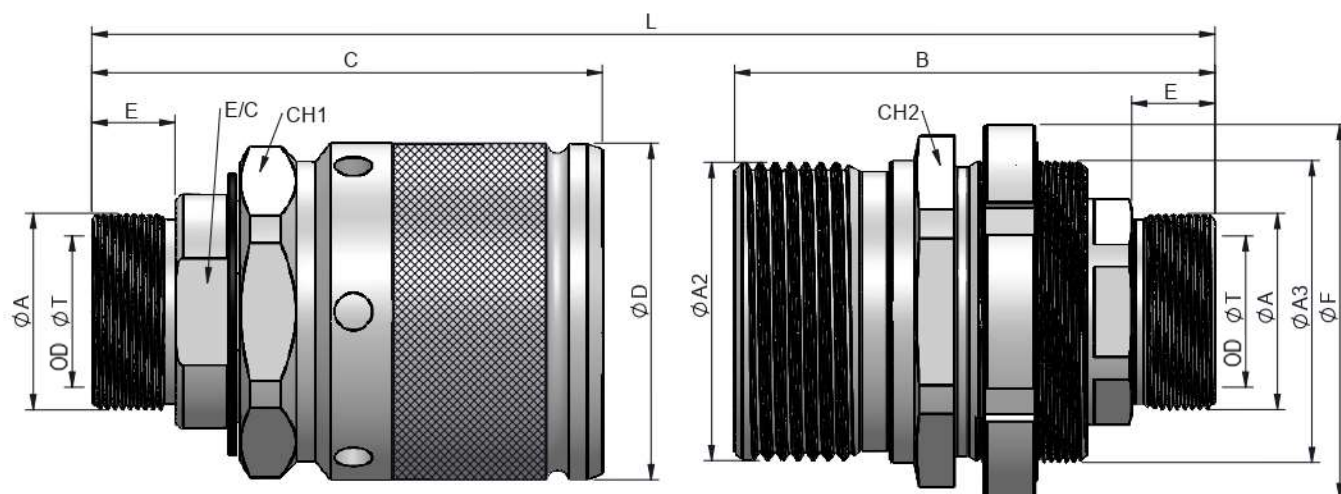


206 SERIES SRK

CARBON STEEL
DIN 2353 (ISO 8434-1)



INTEVA

(S) 32 - 1 1/4"



STANDARD MALE MODELS

STANDARD FEMALE MODELS

(S)	ØA	OD	E	L	REF.		CH1	E/C	C	ØD	REF.		ØA2	ØA3	CH2	ØF	B
32	M45x2	35L	14	223	206.11116JM	420	80	55	135	89	206.12116JM	420	Rd 79x4	M80x2	85	100	127
	M52x2	38S	16		206.11116KN						206.12116KN						
	M52.2.0	42L	14		206.11116JN						206.12116JN						



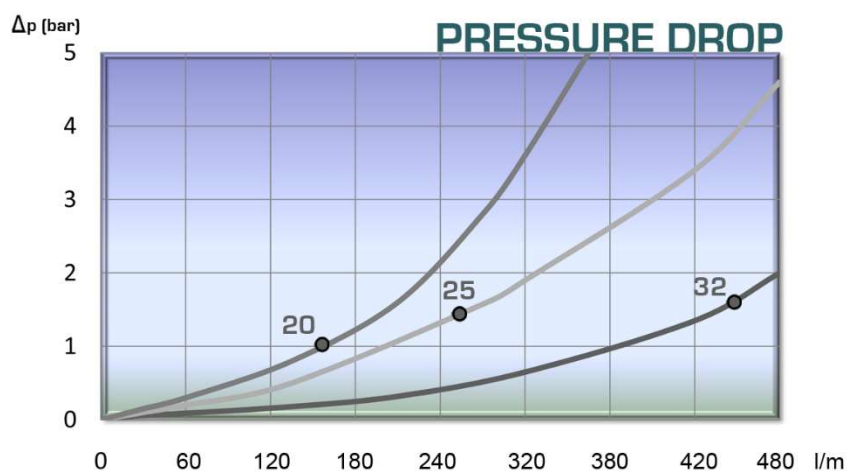
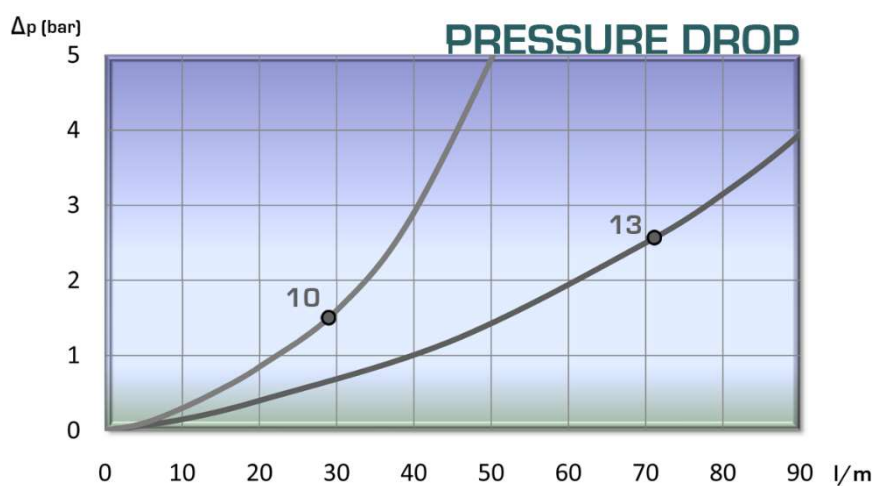
206 SERIES SRK

CARBON STEEL
DIN 2353 (ISO 8434-1)

TECHNICAL DATA

(S)	Rated Flow	Min. Burst Pressure (bar)			Max. Working Pressure
		Male	Female	Connected	
10	29 l/m	1500	1580	1600	420
13	72 l/m	1200	1150	1200	420
20	135 l/m	1250	1300	1280	420
25	250 l/m	1200	1150	1200	350
32	430 l/m	1550	1600	1680	420

Test performed according to ISO 18869





206 SERIES SRK

CAPS &
PLUGS

INTEVA

Designed to protect the female (coupler) and male (nipple) parts while disconnected.

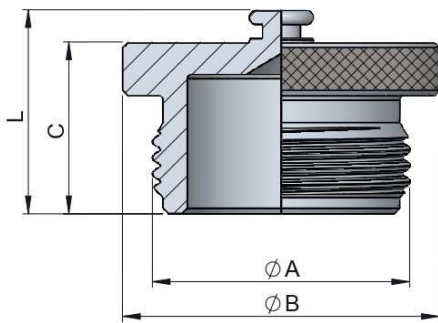
MODEL REFERENCE

Example:

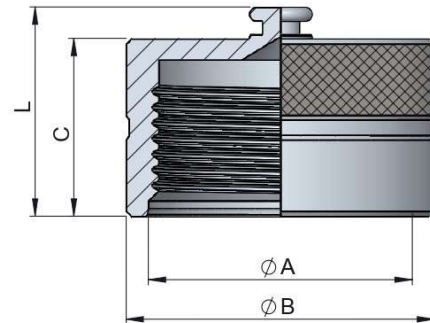
206.6403 AA

Series	Material	Part	Color	Size	Type
205.	6 Aluminum	3 Plug 4 Cap	0 Metal	2 10 3/8" 3 13 1/2" 4 20 3/4" 5 25 1" 6 32 1 1/4"	AA

(S) 10 – (S) 32 - ALUMINUM



PLUG



CAP

(S)	REF.	ØA	ØB	C
10	206.6302AA	32x3	39	25
13	206.6303AA	36x3	44.5	25
20	206.6304AA	48x3	59	32
25	206.6305AA	54x4	64	39
32	206.6306AA	79x4	89.5	44

(S)	REF.	ØA	ØB	C
10	206.6402AA	32x3	39	26
13	206.6403AA	36x3	44.5	24
20	206.6404AA	48x3	59	34
25	206.6405AA	54x4	64	42
32	206.6406AA	79x4	89.5	74