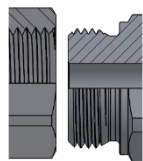


999 SERIES THREADS



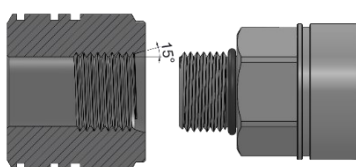
ISO 261 METRIC THREADS - PORT / CONNECTION

ISO 9974-3 (DIN 3852-1 B)



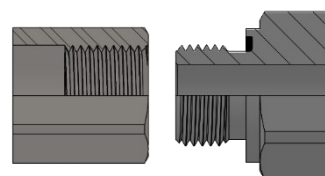
THREAD	FEMALE	MALE
M8X1	NA	PA
M10X1	NB	PB
M12X1.5	NC	PC
M14X1.5	ND	PD
M16X1.5	NE	PE
M18X1.5	NF	PF
M20X1.5	NG	PG
M22X1.5	NH	PH
M24X1.5	NI	PI
M26X1.5	NO	PO
M27X2	-	-
M30X2	NJ	PJ
M33X2	NK	PK
M42X2	NL	PL
M48X2	NM	PM

ISO 6149-2 (ORB)



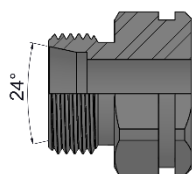
THREAD	FEMALE	MALE
M8X1	EA	OA
M10X1	EC	OC
M12X1.5	EE	OE
M14X1.5	EF	OF
M16X1.5	EG	OG
M18X1.5	EH	OH
M20X1.5	EK	OK
M22X1.5	EM	OM
M30X2	EJ	OJ
M33X2	EQ	OQ
M42X2	ET	OT
M48X2	EU	OU
M60X2	EV	OV

ISO 9974-2 (DIN 3852-11)



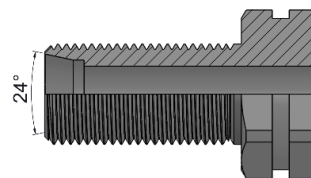
THREAD	FEMALE	MALE
M10X1	NA	QA
M12X1.5	NB	QB
M14X1.5	NC	QC
M16X1.5	ND	QD
M18X1.5	NE	QE
M20X1.5	NG	QG
M22X1.5	NH	QH
M26X1.5	NO	QO
M30X2	NJ	QJ
M33X2	NK	QK
M42X2	NL	QL
M48X2	NM	QM

ISO 8434-1 / DIN 3861

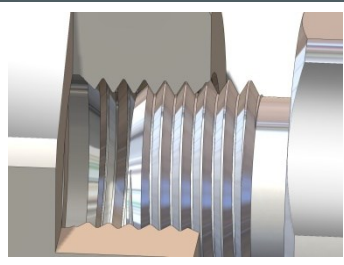


THREAD	LIGHT SERIES		HEAVY SERIES	
M12X1.5	6L	JB	-	-
M14X1.5	8L	JC	-	-
M16X1.5	10L	JD	8S	KD
M18X1.5	12L	JE	10S	KE
M20X1.5	-	-	12S	KF
M22X1.5	15L	JG	14S	KG
M24X1.5	-	-	16S	KH
M26X1.5	18L	JI	-	-
M30X2	22L	JJ	20S	KJ
M36X2	28L	JK	25S	KK
M42X2	-	-	30S	KL
M45X2	35L	JM	-	-
M52X2	42L	JN	38S	KN

ISO 8434-1 / DIN 3861



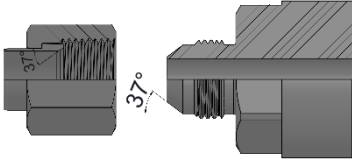
THREAD	LIGHT SERIES		HEAVY SERIES	
M12X1.5	6L	LB	-	-
M14X1.5	8L	LC	-	-
M16X1.5	10L	LD	8S	MD
M18X1.5	12L	LE	10S	ME
M20X1.5	-	-	12S	MF
M22X1.5	15L	LG	14S	MG
M24X1.5	-	-	16S	MH
M26X1.5	18L	LI	-	-
M30X2	22L	LJ	20S	MJ
M36X2	28L	LK	25S	MK
M42X2	-	-	30S	ML
M45X2	35L	LM	-	-
M52X2	-	-	38S	MN



999 SERIES THREADS

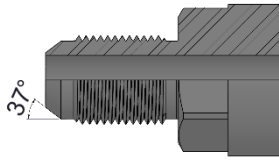
UNIFIED SCREW THREADS ANSI B1.1 – PORT / CONNECTION

SAE 37° (JIC) /
SAE J514 / ISO 8434-2



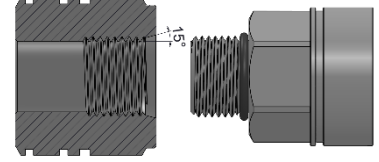
THREAD	FEMALE	MALE
3/8" - 24h UNF	UA	YA
7/16" - 20h UNF	UB	YB
1/2" - 20h UNF	UC	YC
9/16" - 18h UNF	UD	YD
3/4" - 16h UNF	UF	YF
7/8" - 14h UNF	UH	YH
1 1/16" - 12h UN	UK	YK
1 3/16" - 12h UN	UM	YM
1 5/16" - 12h UN	UO	YO
1 5/8" - 12h UN	UT	YT
1 7/8" - 12h UN	UV	YV
2 1/2" - 12h UN	-	-

SAE 37° (JIC) / SAE J514 / ISO 8434-2
BULKHEAD



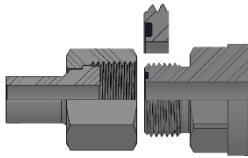
THREAD	FEMALE	MALE
3/8" - 24h UNF	-	YAP
7/16" - 20h UNF	-	YBP
1/2" - 20h UNF	-	YCP
9/16" - 18h UNF	-	YDP
3/4" - 16h UNF	-	YFP
7/8" - 14h UNF	-	YHP
1 1/16" - 12h UN	-	YKP
1 3/16" - 12h UN	-	YMP
1 5/16" - 12h UN	-	YOP
1 5/8" - 12h UN	-	YTP
1 7/8" - 12h UN	-	YVP
2 1/2" - 12h UN	-	-

SAE J1926 / ISO 11926
(ORB)



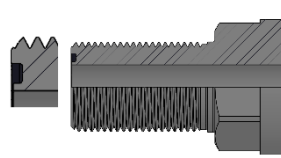
THREAD	FEMALE SAE J1926-1	MALE SAE J1926-2
3/8" - 24h UNF	GA	HA
7/16" - 20h UNF	GB	HB
1/2" - 20h UNF	GC	HC
9/16" - 18h UNF	GD	HD
3/4" - 16h UNF	GF	HF
7/8" - 14h UNF	GH	HH
1 1/16" - 12h UN	GK	HK
1 3/16" - 12h UN	GM	HM
1 5/16" - 12h UN	GO	HO
1 5/8" - 12h UN	GT	HT
1 7/8" - 12h UN	GV	HV
2 1/2" - 12 h UN	-	-

SAE J1453 / ISO 8434-3
(ORFS)

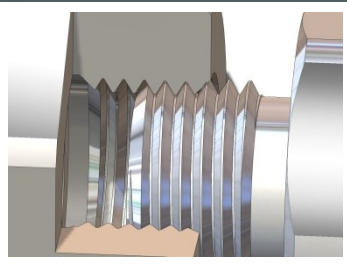


THREAD	FEMALE	MALE
9/16" - 18h UNF	VD	ZD
5/8" - 18h UNF	VB	ZB
11/16" - 16h UN	VE	ZE
13/16" - 16h UN	VG	ZG
1" - 14 UNS	VI	ZI
1 3/16" - 12h UN	VM	ZM
1 5/16" - 12h UN	VO	ZO
1 7/16" - 12h UN	VQ	ZQ
1 11/16" - 12h UN	VU	ZU
2" - 12 UN	-	-

SAE J1453 / ISO 8434-3
(ORFS BULKHEAD)



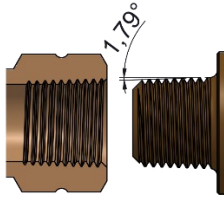
THREAD	FEMALE	MALE
9/16" - 18h UNF	-	ZDP
5/8" - 18h UNF	-	ZBP
11/16" - 16h UN	-	ZEP
13/16" - 16h UN	-	ZGP
1" - 14 UNS	-	ZIP
1 3/16" - 12h UN	-	ZMP
1 5/16" - 12h UN	-	ZOP
1 7/16" - 12h UN	-	ZQP
1 11/16" - 12h UN	-	ZUP
2" - 12 UN	-	-



999 SERIES THREADS

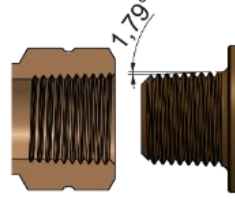
TAPERED THREAD

NPTF ASME B1.20.3



THREAD	FEMALE	MALE
1/8"	BA	BL
1/4"	BB	BM
3/8"	BC	BN
1/2"	BD	BO
3/4"	BE	BP
1"	BF	BQ
1 1/4"	BG	BR
1 1/2"	BH	BS
2"	BI	BT
2 1/2"	BJ	BU
3"	BK	BV

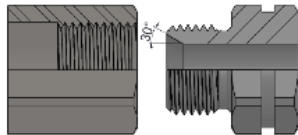
BSPT ISO 7/1 (DIN 3852-2 C)



THREAD	FEMALE	MALE
1/8"	DA	DL
1/4"	DB	DM
3/8"	DC	DN
1/2"	DD	DO
3/4"	DE	DP
1"	DF	DQ
1 1/4"	DG	DR
1 1/2"	DH	DS
2"	DI	DT
2 1/2"	-	-
3"	-	-

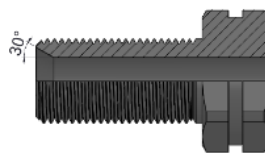
ISO 228/1 BSP THREADS

BSPP / BS5200



THREAD	FEMALE	MALE
1/8"	AA	AL
1/4"	AB	AM
3/8"	AC	AN
1/2"	AD	AO
3/4"	AE	AP
1"	AF	AQ
1 1/4"	AG	AR
1 1/2"	AH	AS
2"	AI	AT
2 1/2"	AJ	AU
3"	AK	AV

BSPP / BS5200 BULKHEAD



THREAD	FEMALE	MALE
1/8"	-	CL
1/4"	-	CM
3/8"	-	CN
1/2"	-	CO
3/4"	-	CP
1"	-	CQ
1 1/4"	-	CR
1 1/2"	-	CS
2"	-	CT
2 1/2"	-	-
3"	-	-

SPECIALS

THREAD	
M20X1.5 (13.5)	KFA
M20X1.5 (CONO 60°)	KFB
M16X1.5 BULKHEAD M20X1.5	JDA
M22X1.5 PROLOGADA	JGA
M22X1.5 15L LONG. HEX 35MM	JGB
M22X1.5 BULKHEAD PROLOGADA	LGA
3/4" 16h UNF (SIN CONO 37°)	HFA
3/4" 16h UNF (CILINDRICA)	GFA