

# 1087 SERIES CRT

CARBON STEEL



## Cartridge (CRT)



Cartridges for harvesters, as connection to trailers or balers.

Designed to be integrated into cast iron blocks, where it's easy to assemble & disassemble without special tools. Each kit contains a retaining ring to mount the cartridge and an internal O-ring, and a PTFE back-up ring.

ISO standard ISO 7241 part A.

### TECHNICAL SPECIFICATIONS

<b>Material:</b>	Steel
<b>Surface treatment:</b>	Cr (III)
<b>Seals:</b>	NBR
<b>Interchange:</b>	ISO 7241-A
<b>Valve Type:</b>	Poppet
<b>Connection:</b>	Push to Connect
<b>Disconnection:</b>	Lever
<b>Connection under pressure:</b>	Allowed Residual

### Working Temperature (O-ring)



**Sectors:** Industrial / Agricultural



1087-1

INTEVA reserves the right to make modifications to its products without prior notice. Any external or internal alterations to our products will automatically void the warranty.





# 1087 SERIES CRT

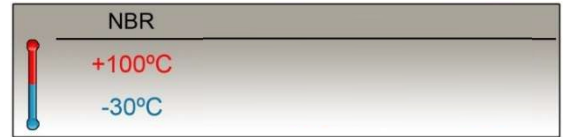
CARBON STEEL

## TECHNICAL SPECIFICATIONS

<b>Operating pressure:</b>	Up to 350 Bar	
<b>Materials:</b>	Body:	Carbon Steel EN 10277-3
	Surface treatment:	Cr(III)
	O-rings:	NBR
	Back-up-ring:	PTFE
	Springs:	EN 10270-1/SH
	Balls:	AISI 1010/1015
<b>Closing System:</b>	Poppet Valve, C.U.R.P.	
<b>Connection Under Pressure:</b>	Allowed Residual	

**Available Size:** 1/2" (ISO 7241-A)

### Working Temperature (O-rings)



**Sectors:** Industrial / Agricultural



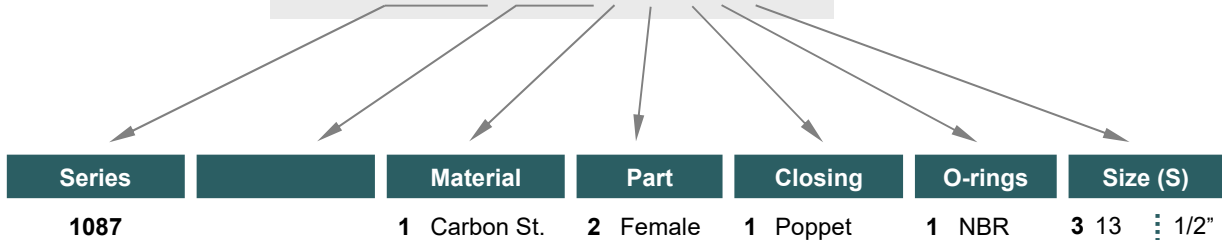
**Applications:** Designed for Hydraulic Oil (Group II-2014/68/EU)

**Interchange:** FASTER KIT 5DCPVA08A

## MODEL STRUCTURE

Example:

# 1087.KID12113

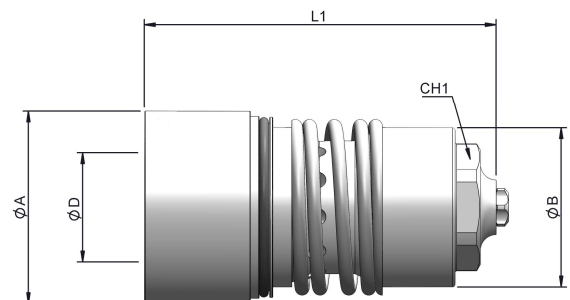


## (S) 13

### STANDARD FEMALE MODEL

(S)	REF.		CH1	L1	ØA	ØB	ØD
13	1087.KID12113		350	22	66.8	36.4	30.1

\* Only one model available



## 1087-2

INTEVA reserves the right to make modifications to its products without prior notice. Any external or internal alterations to our products will automatically void the warranty.





# 1087 SERIES CRT

CARBON STEEL



## CARTRIDGE COUPLING REPLACEMENT INSTRUCTIONS



1



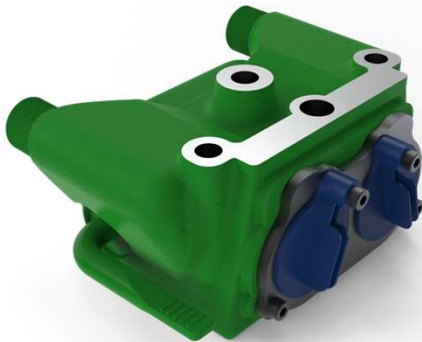
### WARNINGS !

This product is subjected to high internal pressures. Always use the most suitable protection devices when working.

### CARTRIDGE SPARE KIT.

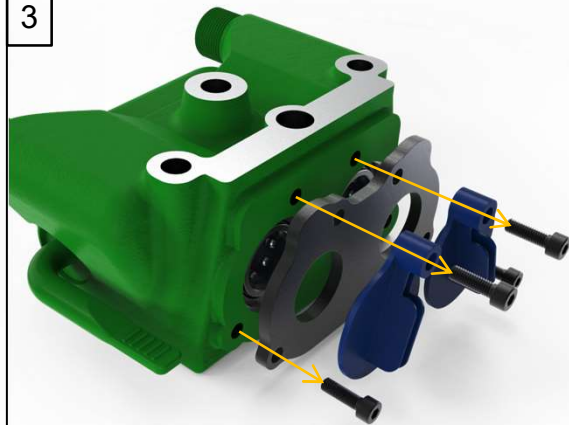
(1) Cartridge coupling, (1) Spiral Retaining ring, (1) O-ring, (1) Sliding pad

2



### COMPLETED KIT.

3



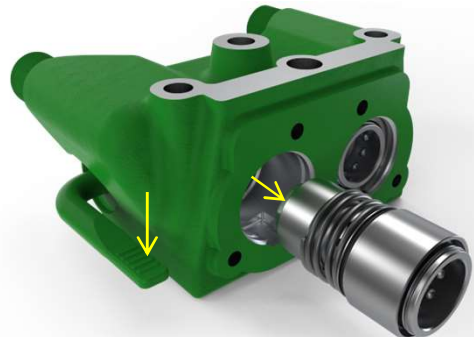
### UNSCREW THE FIXING SCREWS FROM THE PLATE AND REMOVE THE FRONT COVER.

4



### REMOVE THE SPIRAL RETAINING RING BY USING TWO FLAT TOOLS.

5



### REMOVE THE CARTRIDGE, BY USING THE PRESSURE RELIEF LEVER AND TWO FLAT TOOLS.

1087-3



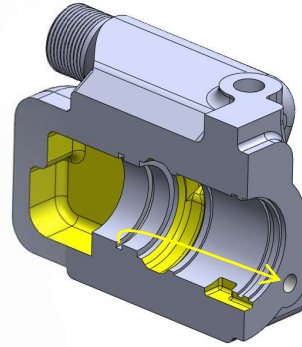
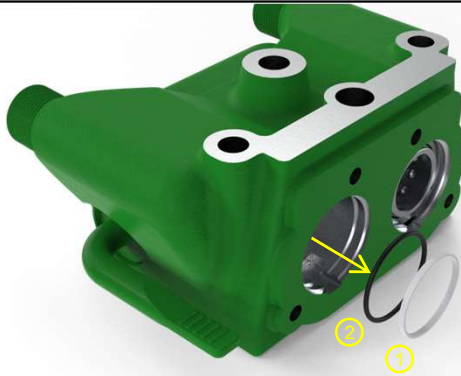
# 1087 SERIES CRT

CARBON STEEL



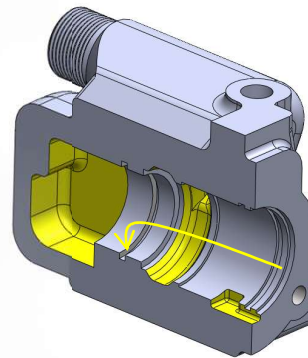
## CARTRIDGE COUPLING REPLACEMENT INSTRUCTIONS

6



REMOVE O-RING AND SLIDING PAD IN ORDER FROM GROOVE INSIDE THE CARTRIDGE SEAT.

7



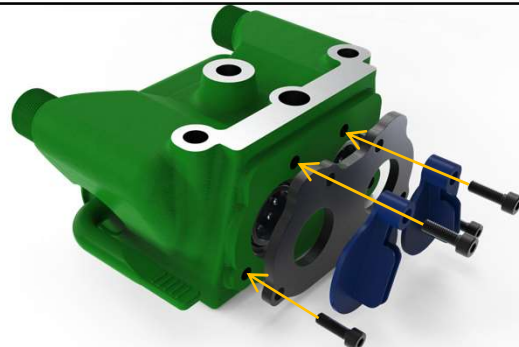
THOROUGHLY CLEAN THE SEAT AND ASSEMBLE FIRST THE O-RING AND THEN THE SLIDING PAD. PAY ATTENTION TO NOT DAMAGE THEM.

8



INSERT THE CARTRIDGE IN ITS SEAT AND AFTERWARDS STOP IT WITH THE SPIRAL RETAINING RING.

9



SCREW THE FIXING SCREWS FROM THE PLATE AND THE FRONT COVER.

1087-4

INTEVA reserves the right to make modifications to its products without prior notice. Any external or internal alterations to our products will automatically void the warranty.

